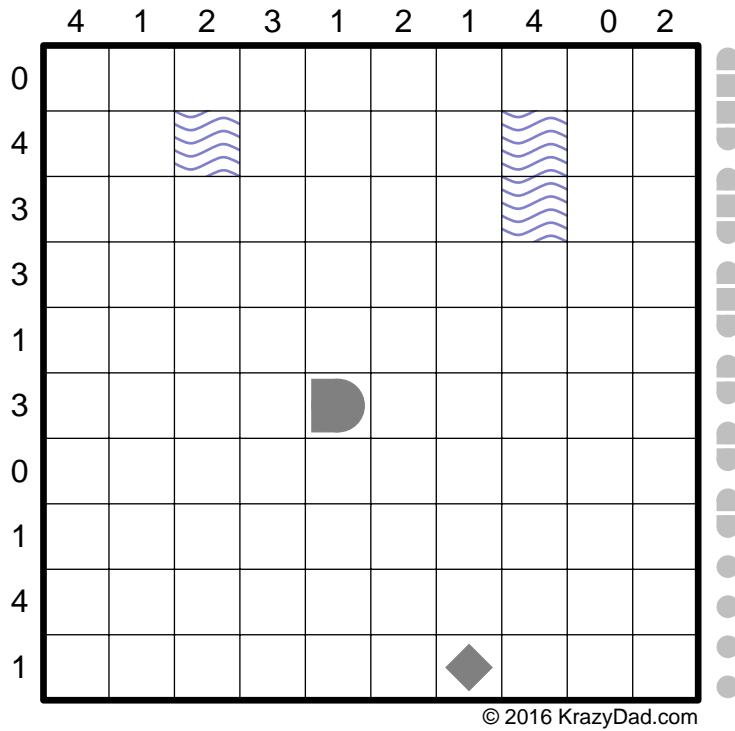
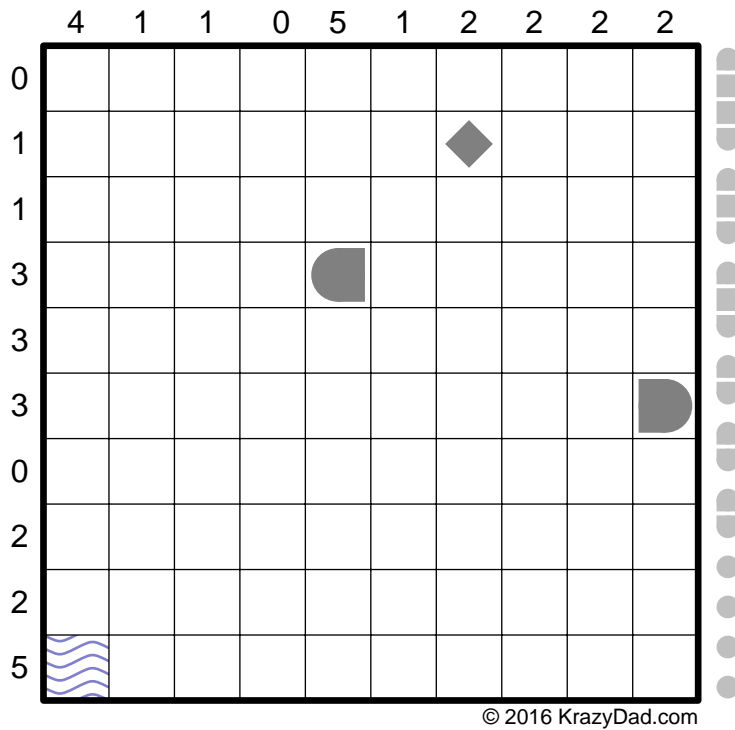


10x10 Battleships by Krazydad, Volume 3, Book 4

#1



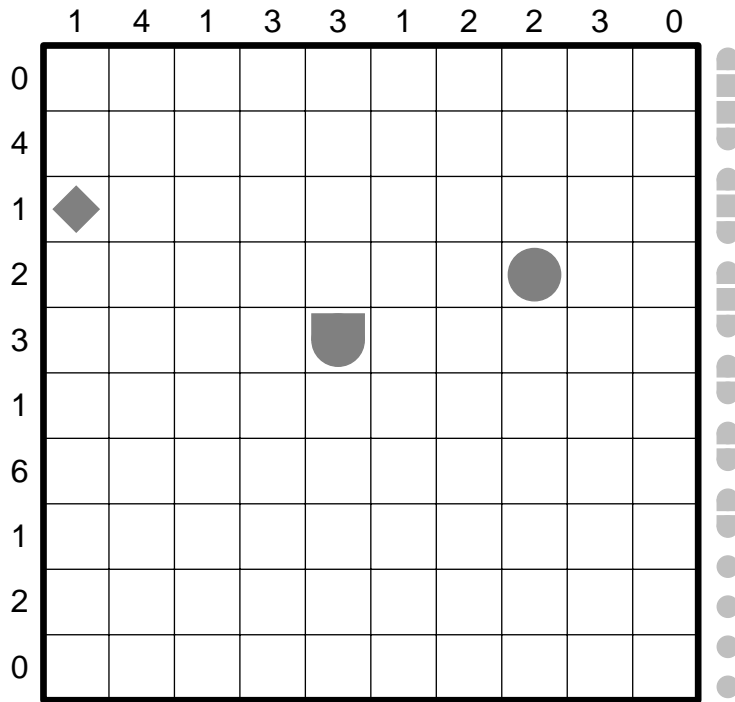
#2



Battleships is a solitaire version of the classic strategy game in which you must locate and sink a hidden fleet. The numbers indicate the number of squares in each row/column that contain a ship or ship segment. Clues may indicate water, specific ships, or parts of ships. Circles indicate submarines (one-square ships). Semicircles indicate ends of larger ships. Large squares indicate ship middles. Diamonds are unspecified ship pieces. The complete list of ships is shown on the right side of the puzzle. No ship may touch another ship, even diagonally.

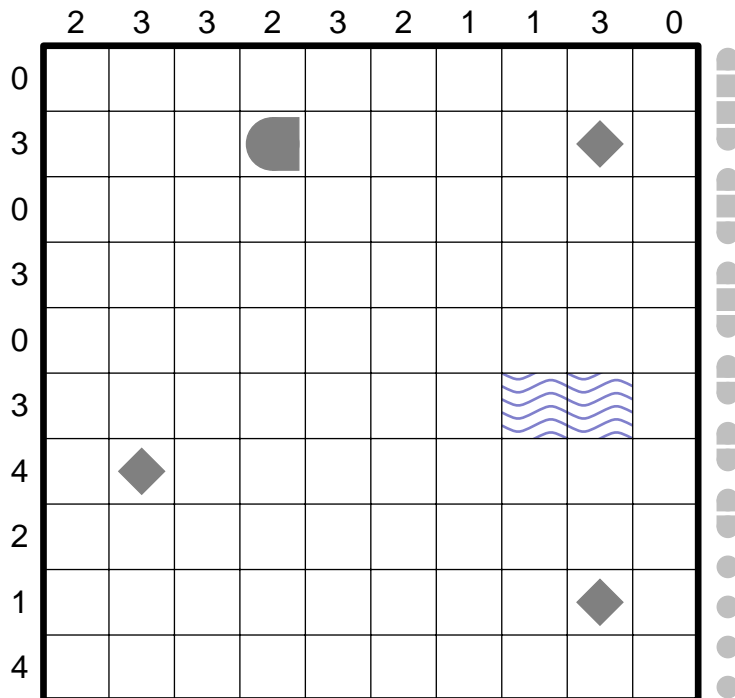
10x10 Battleships by Krazydad, Volume 3, Book 4

#3



© 2016 KrazyDad.com

#4

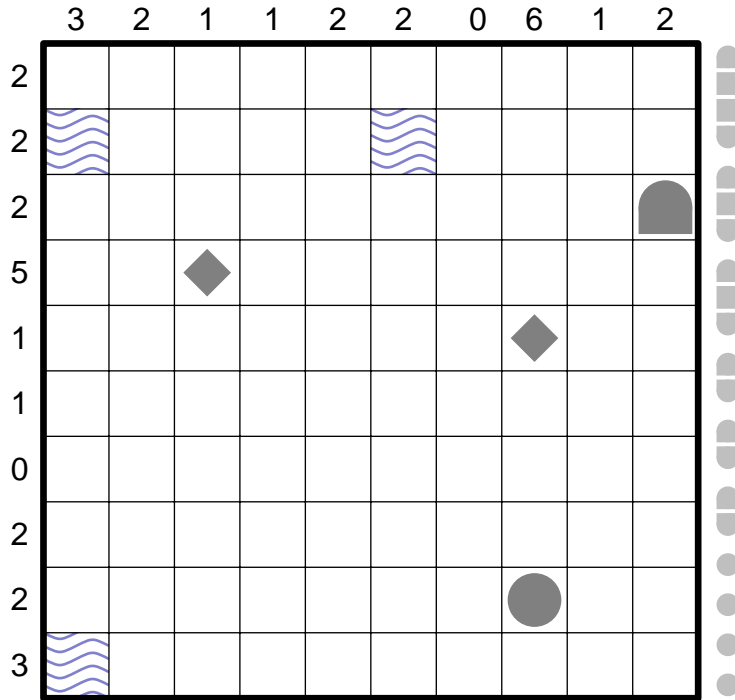


© 2016 KrazyDad.com

Battleships is a solitaire version of the classic strategy game in which you must locate and sink a hidden fleet. The numbers indicate the number of squares in each row/column that contain a ship or ship segment. Clues may indicate water, specific ships, or parts of ships. Circles indicate submarines (one-square ships). Semicircles indicate ends of larger ships. Large squares indicate ship middles. Diamonds are unspecified ship pieces. The complete list of ships is shown on the right side of the puzzle. No ship may touch another ship, even diagonally.

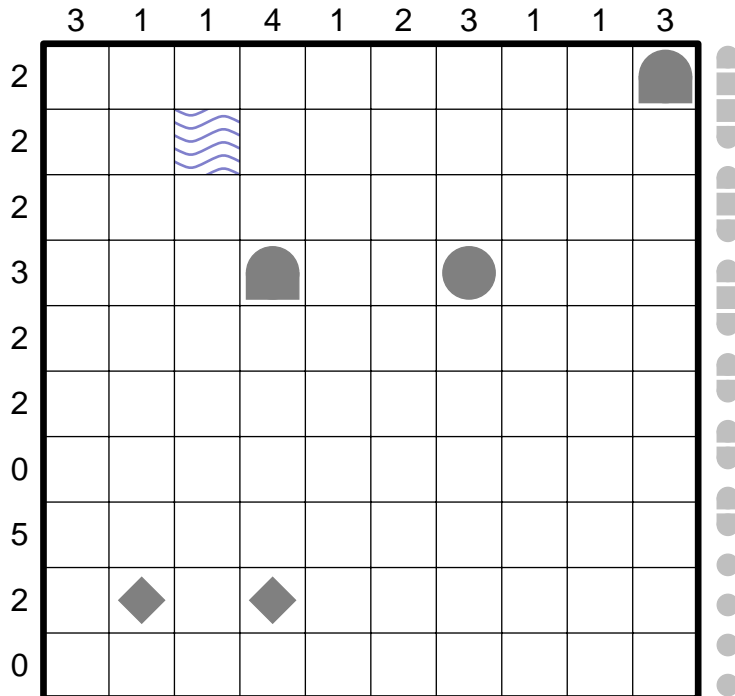
10x10 Battleships by Krazydad, Volume 3, Book 4

#5



© 2016 KrazyDad.com

#6

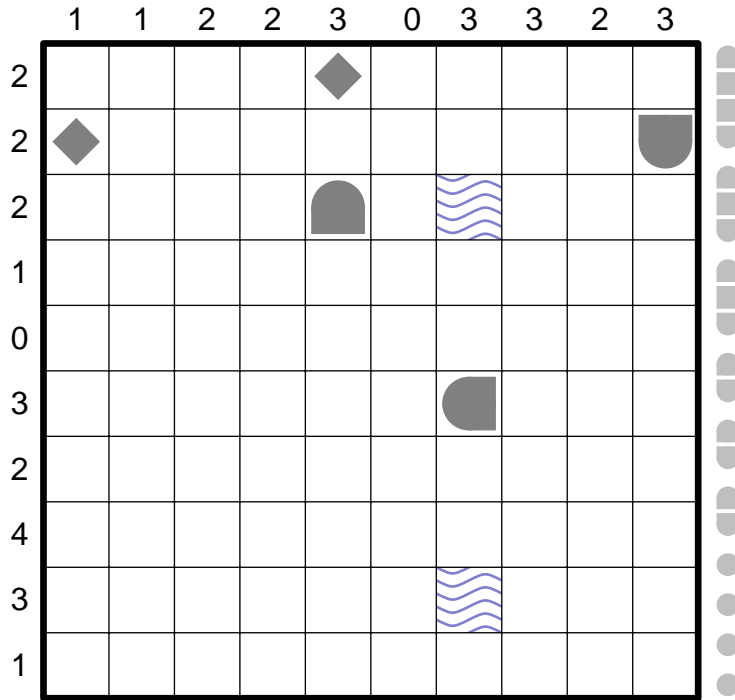


© 2016 KrazyDad.com

Battleships is a solitaire version of the classic strategy game in which you must locate and sink a hidden fleet. The numbers indicate the number of squares in each row/column that contain a ship or ship segment. Clues may indicate water, specific ships, or parts of ships. Circles indicate submarines (one-square ships). Semicircles indicate ends of larger ships. Large squares indicate ship middles. Diamonds are unspecified ship pieces. The complete list of ships is shown on the right side of the puzzle. No ship may touch another ship, even diagonally.

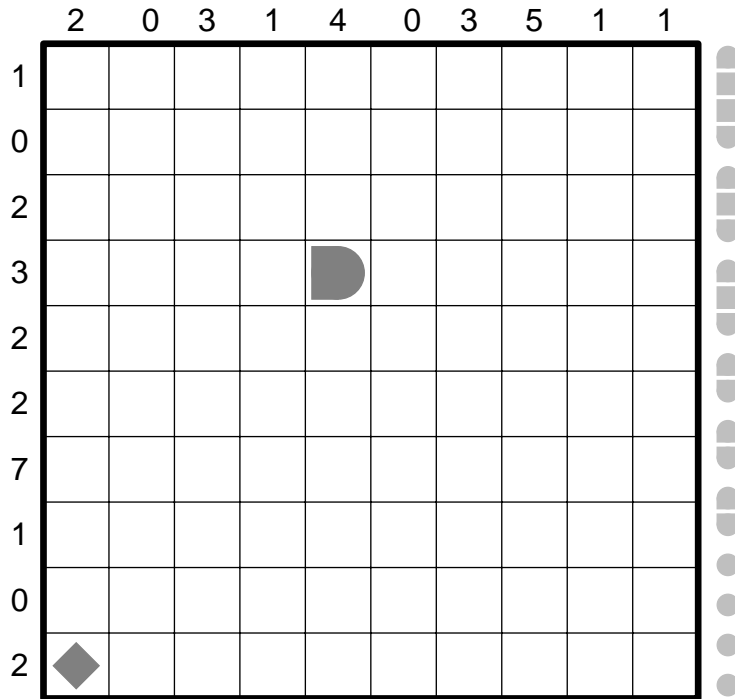
10x10 Battleships by Krazydad, Volume 3, Book 4

#7



© 2016 KrazyDad.com

#8



© 2016 KrazyDad.com

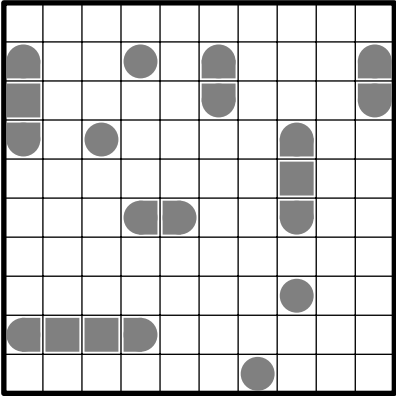
Battleships is a solitaire version of the classic strategy game in which you must locate and sink a hidden fleet. The numbers indicate the number of squares in each row/column that contain a ship or ship segment. Clues may indicate water, specific ships, or parts of ships. Circles indicate submarines (one-square ships). Semicircles indicate ends of larger ships. Large squares indicate ship middles. Diamonds are unspecified ship pieces. The complete list of ships is shown on the right side of the puzzle. No ship may touch another ship, even diagonally.



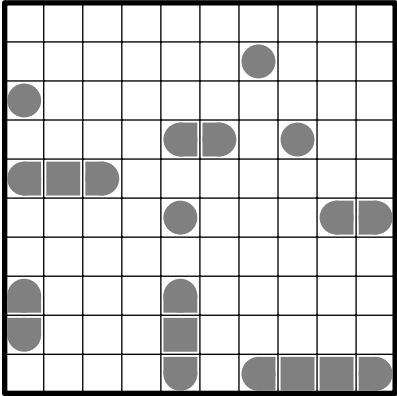
Answers

10x10 Battleships by Krazydad, Volume 3, Book 4

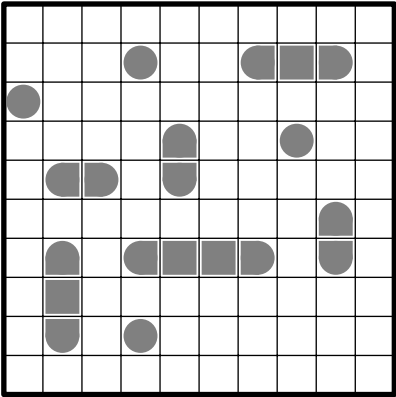
#1



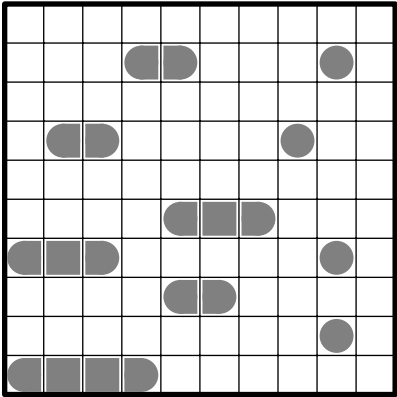
#2



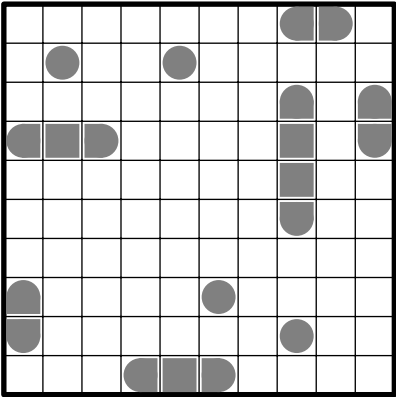
#3



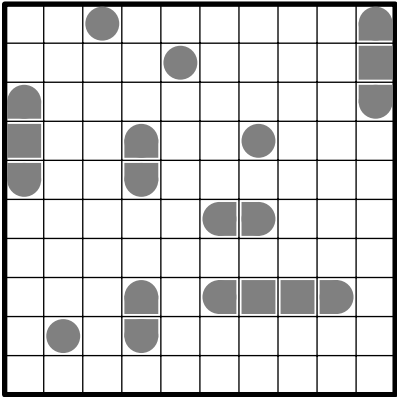
#4



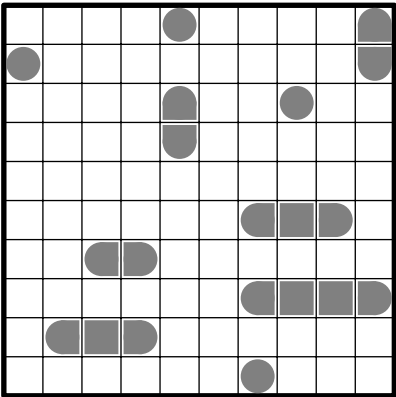
#5



#6



#7



#8

