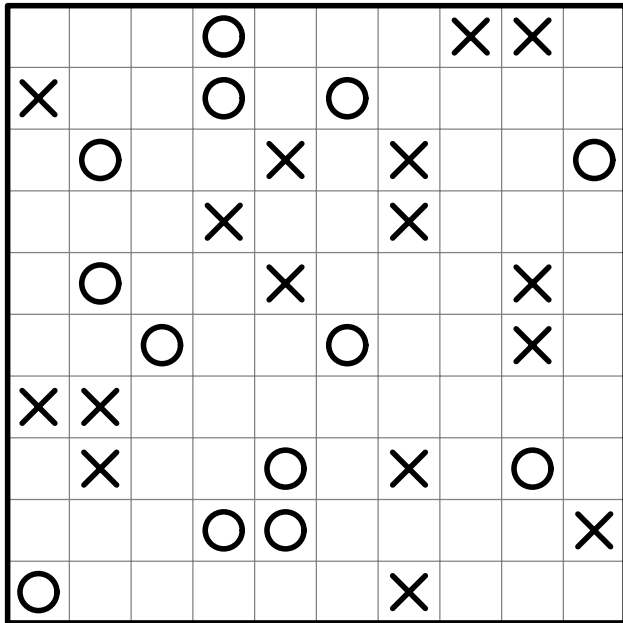
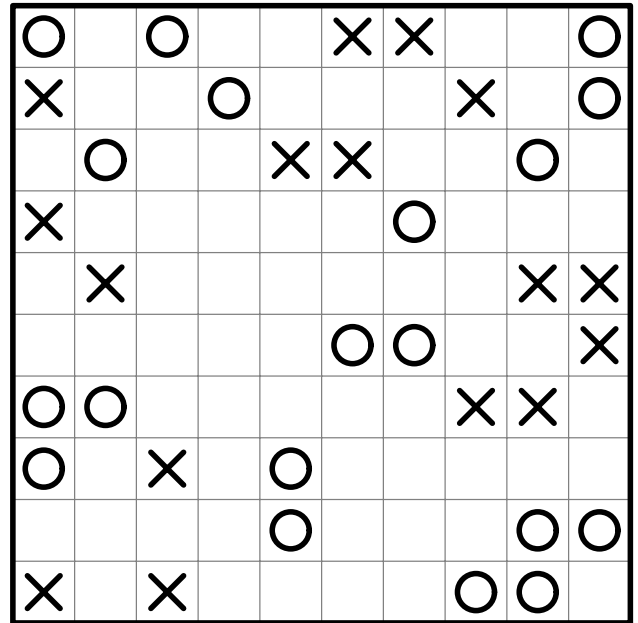


#1



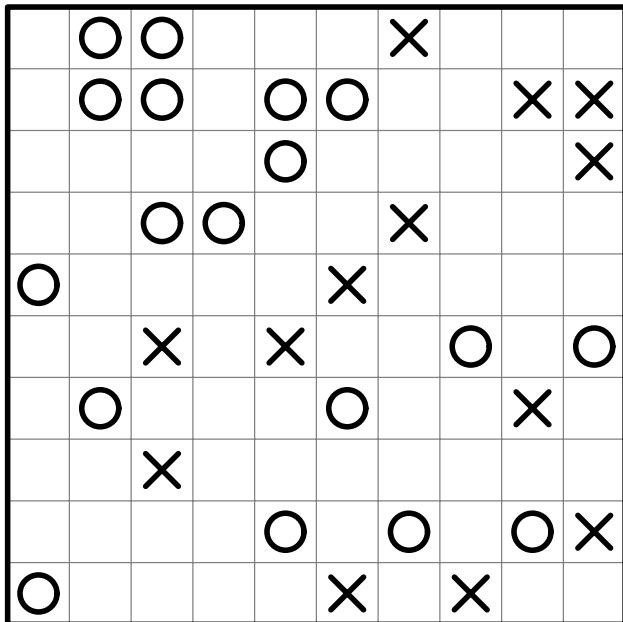
© 2023 krazydad.com

#2



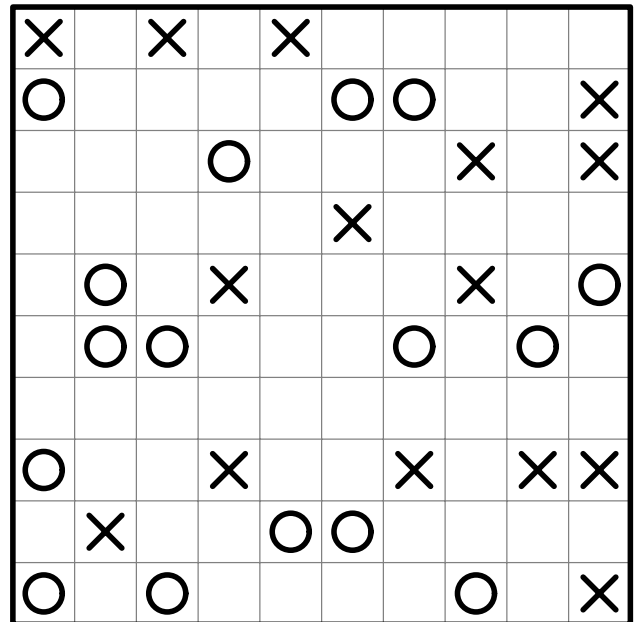
© 2023 krazydad.com

#3



© 2023 krazydad.com

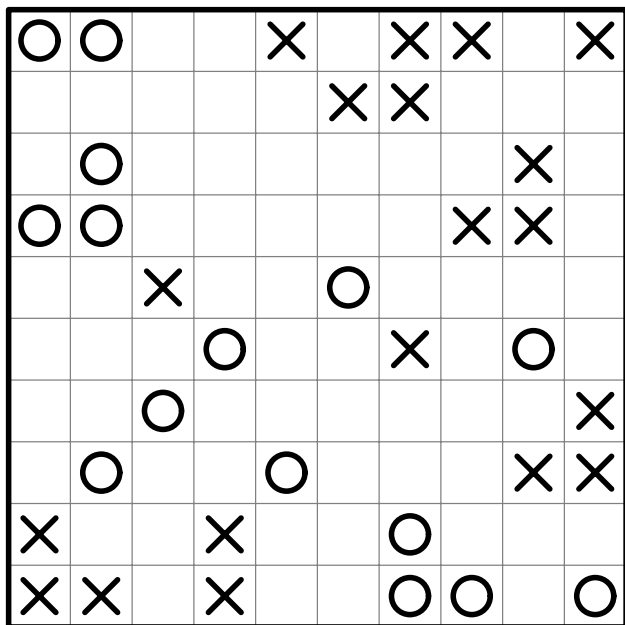
#4



© 2023 krazydad.com

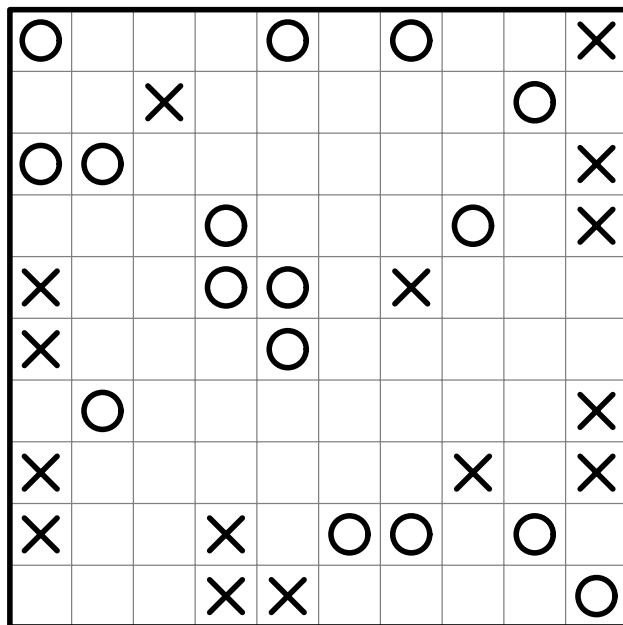
The finished puzzle should be filled with Xs and Os. Horizontally and vertically, there should never be a continuous run of the same symbol longer than 2. There are an equal number of Xs and Os in each row and column. All rows are unique. All columns are unique, too.

#5



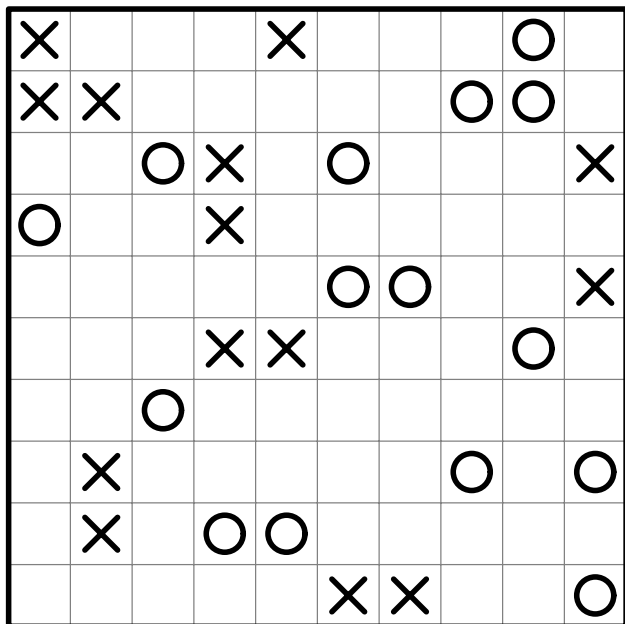
© 2023 krazydad.com

#6



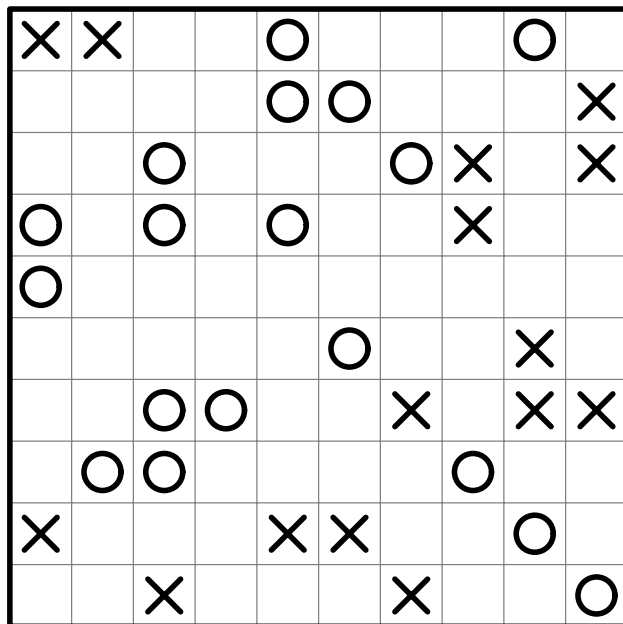
© 2023 krazydad.com

#7



© 2023 krazydad.com

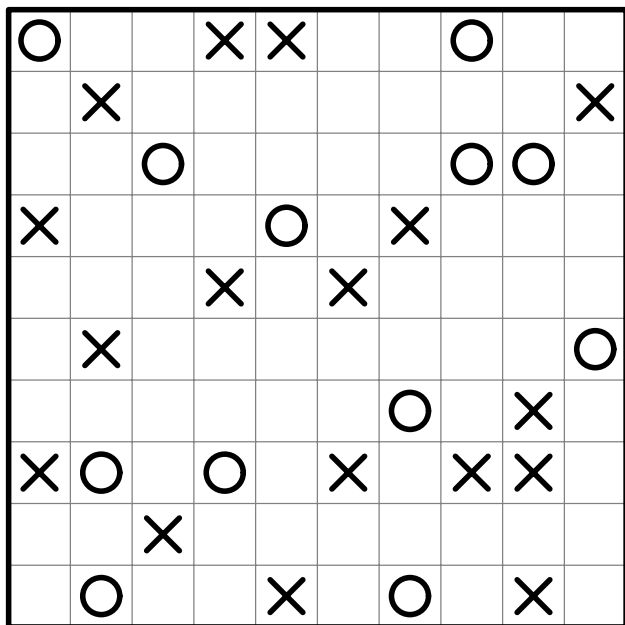
#8



© 2023 krazydad.com

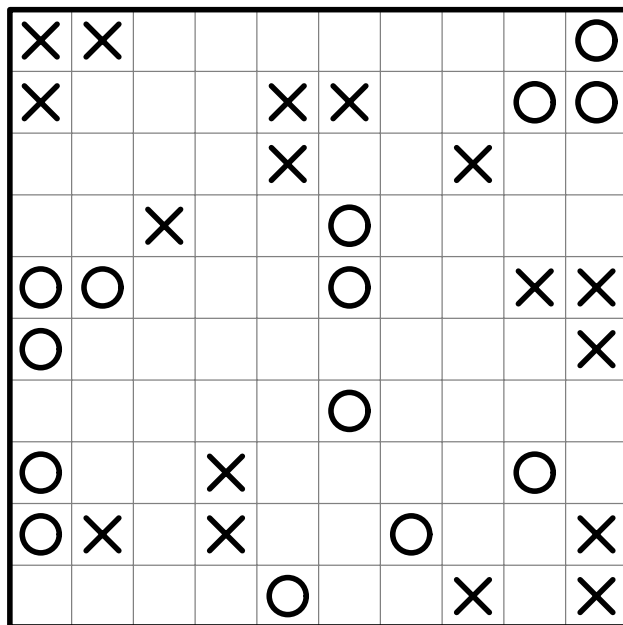
The finished puzzle should be filled with Xs and Os. Horizontally and vertically, there should never be a continuous run of the same symbol longer than 2. There are an equal number of Xs and Os in each row and column. All rows are unique. All columns are unique, too.

#9



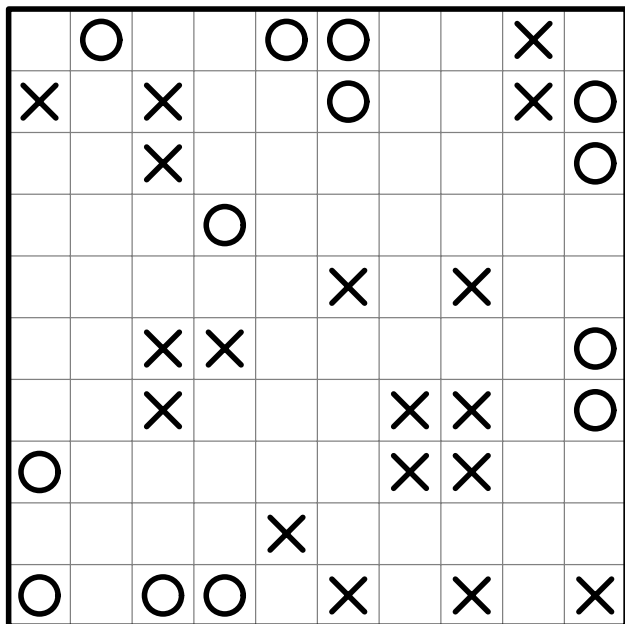
© 2023 krazydad.com

#10



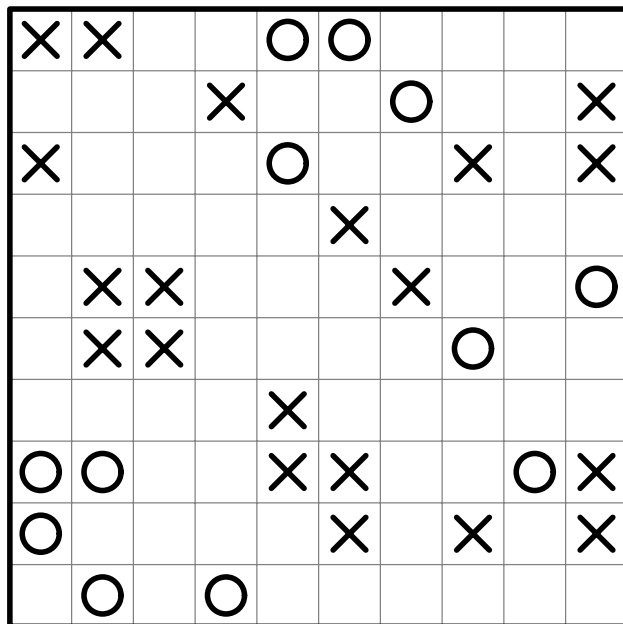
© 2023 krazydad.com

#11



© 2023 krazydad.com

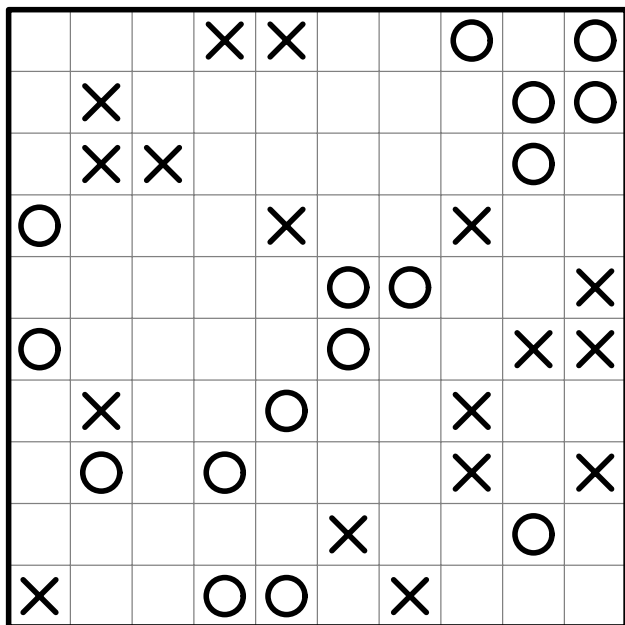
#12



© 2023 krazydad.com

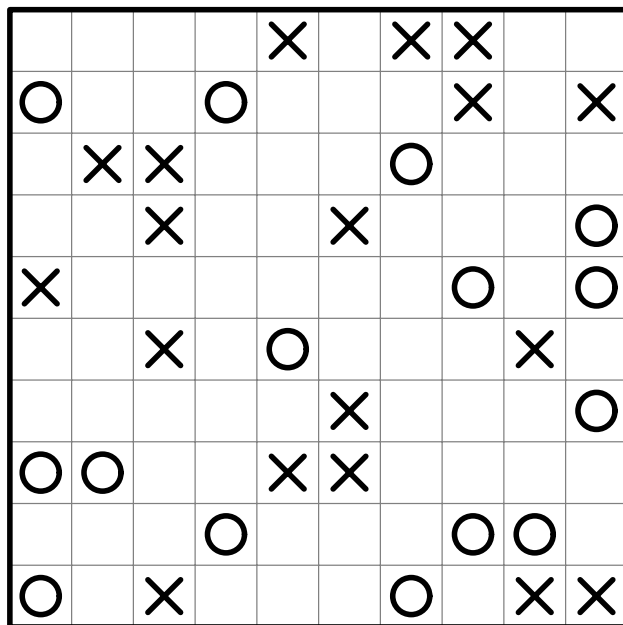
The finished puzzle should be filled with Xs and Os. Horizontally and vertically, there should never be a continuous run of the same symbol longer than 2. There are an equal number of Xs and Os in each row and column. All rows are unique. All columns are unique, too.

#13



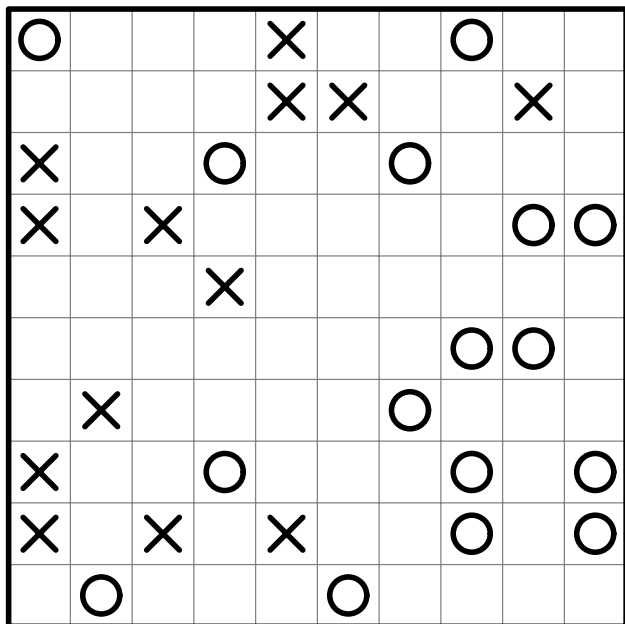
© 2023 krazydad.com

#14



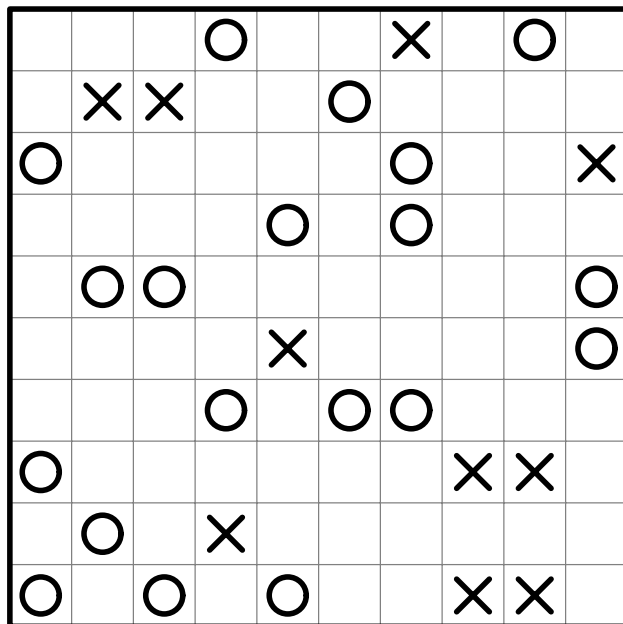
© 2023 krazydad.com

#15



© 2023 krazydad.com

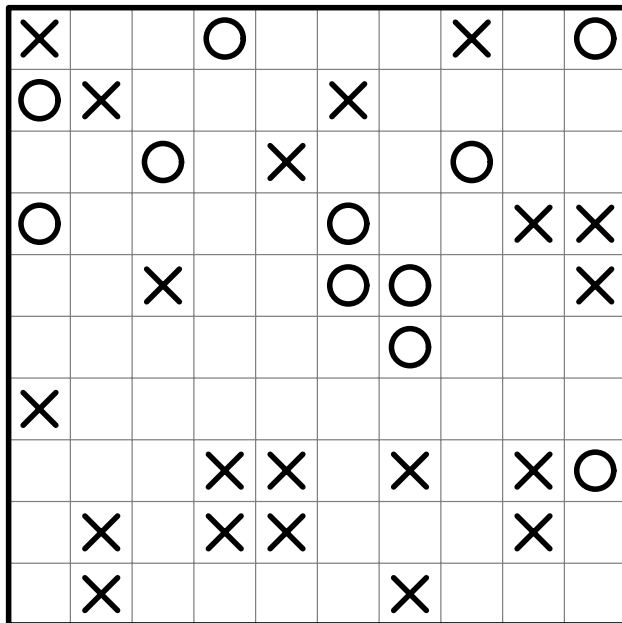
#16



© 2023 krazydad.com

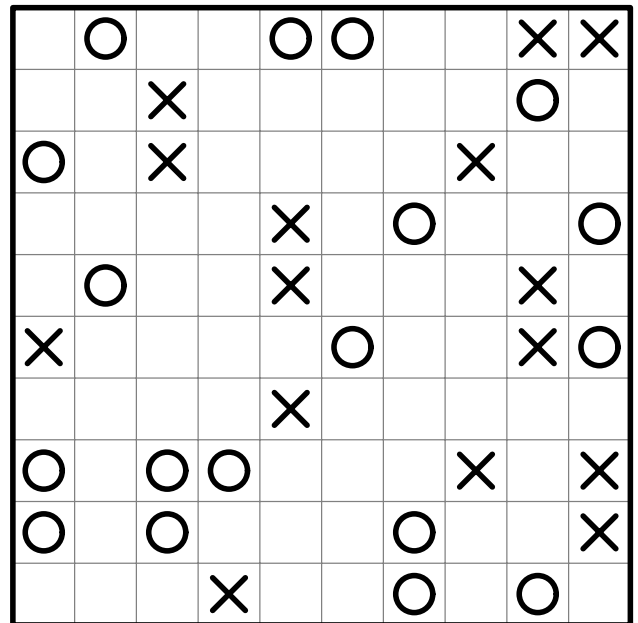
The finished puzzle should be filled with Xs and Os. Horizontally and vertically, there should never be a continuous run of the same symbol longer than 2. There are an equal number of Xs and Os in each row and column. All rows are unique. All columns are unique, too.

#17



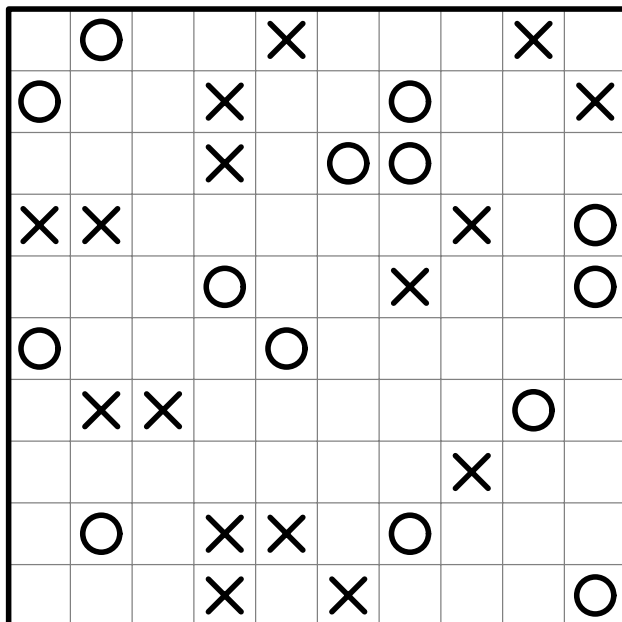
© 2023 krazydad.com

#18



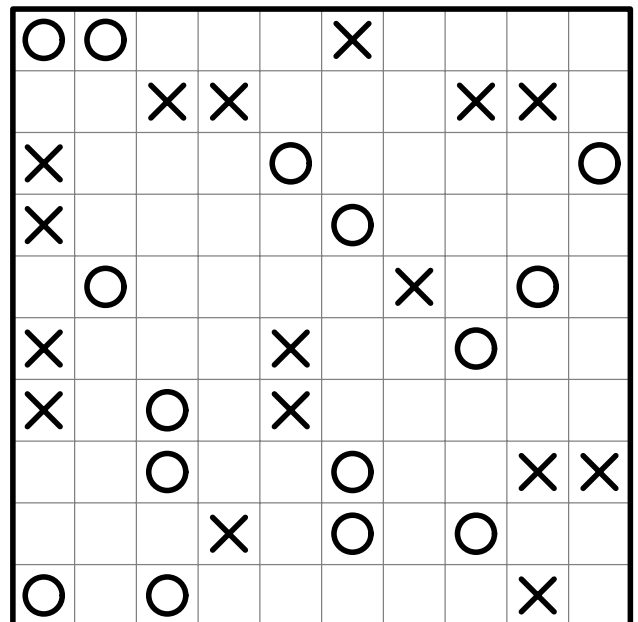
© 2023 krazydad.com

#19



© 2023 krazydad.com

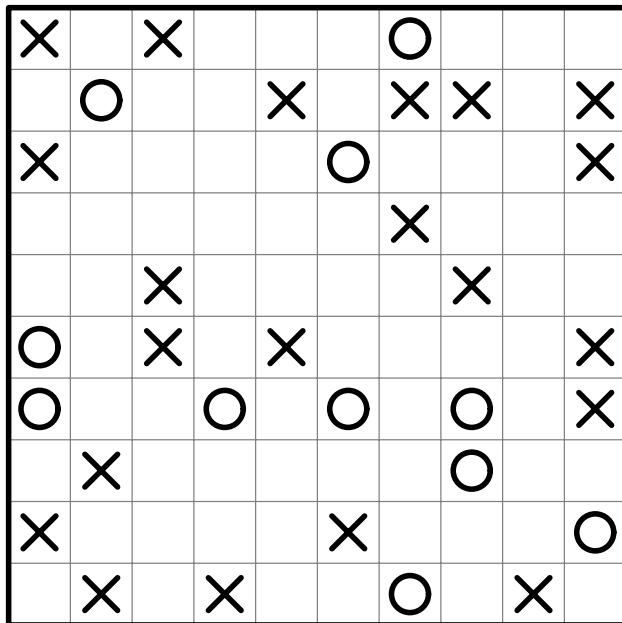
#20



© 2023 krazydad.com

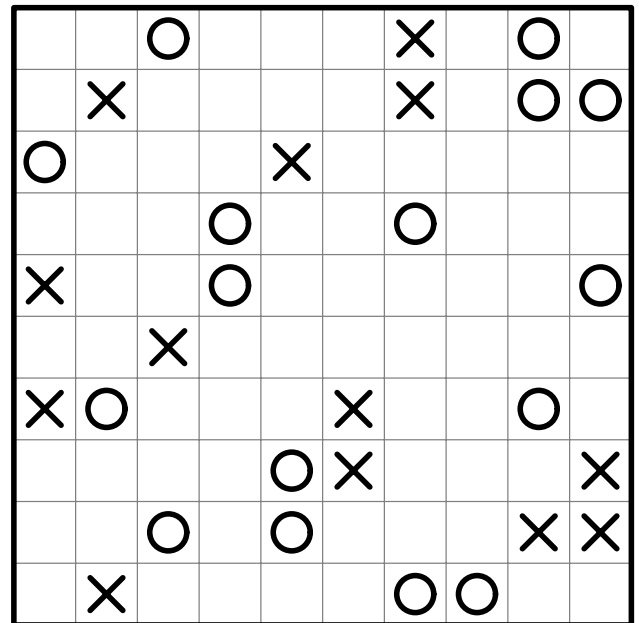
The finished puzzle should be filled with Xs and Os. Horizontally and vertically, there should never be a continuous run of the same symbol longer than 2. There are an equal number of Xs and Os in each row and column. All rows are unique. All columns are unique, too.

#21



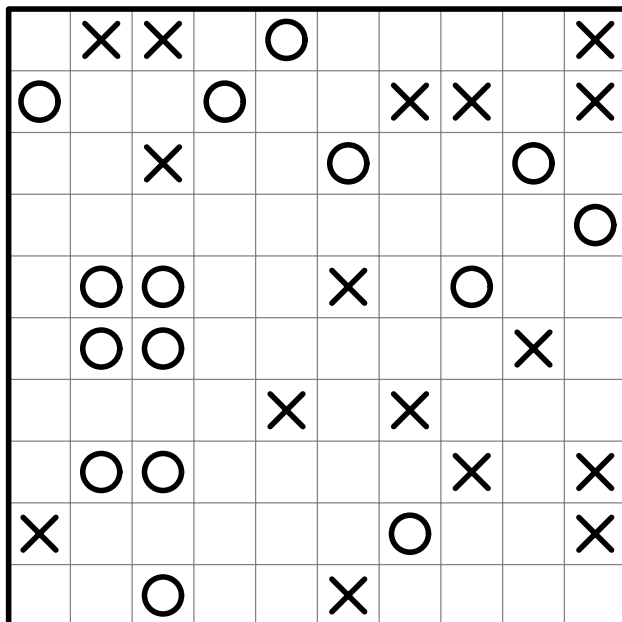
© 2023 krazydad.com

#22



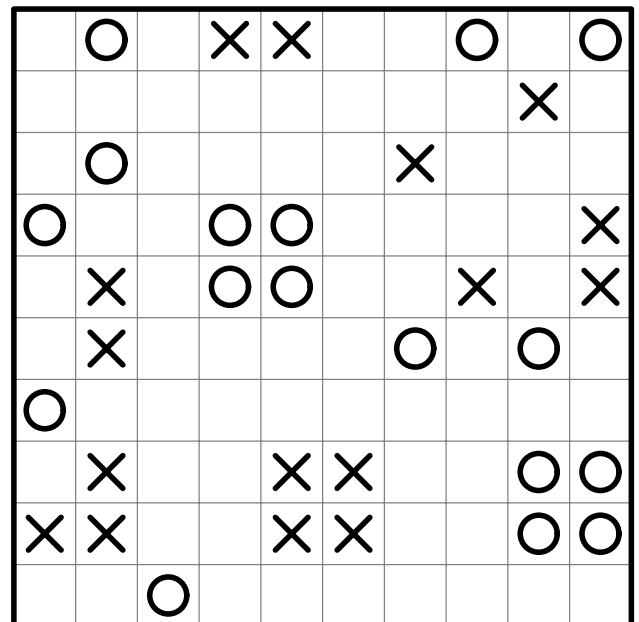
© 2023 krazydad.com

#23



© 2023 krazydad.com

#24



© 2023 krazydad.com

The finished puzzle should be filled with Xs and Os. Horizontally and vertically, there should never be a continuous run of the same symbol longer than 2. There are an equal number of Xs and Os in each row and column. All rows are unique. All columns are unique, too.

# 10x10 Easy Binox by Krazydad

# ANSWERS

