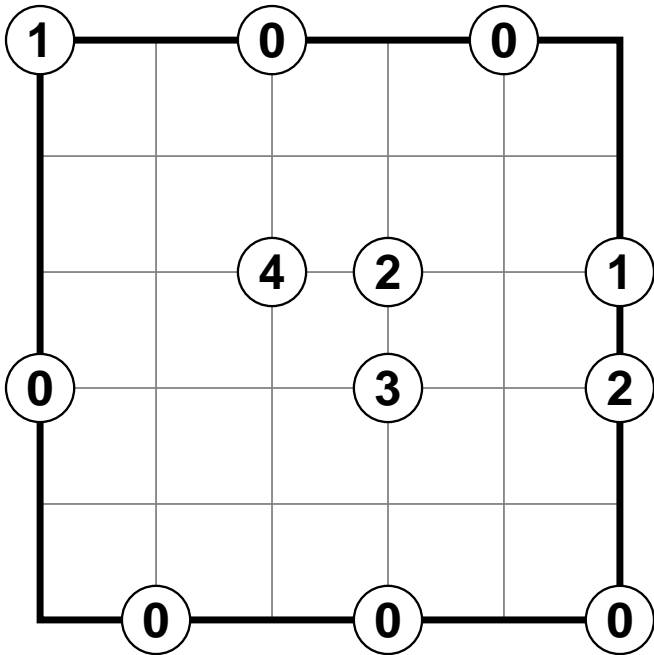
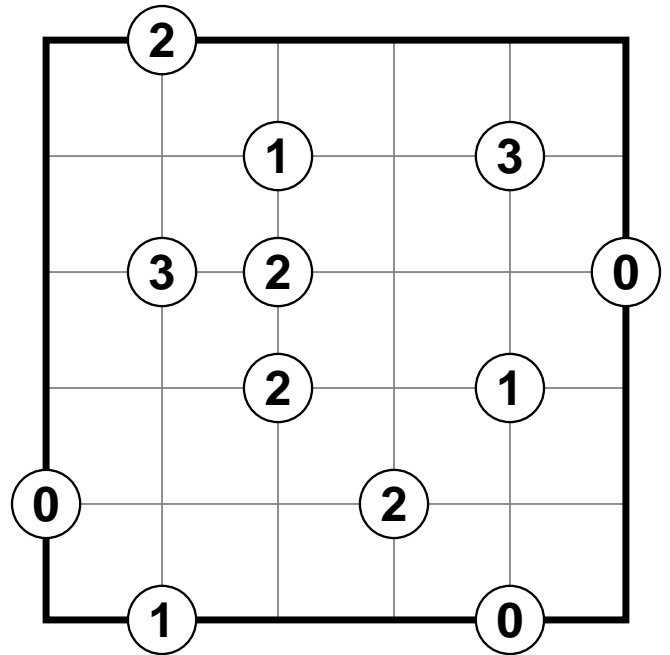


Zigzag Puzzles

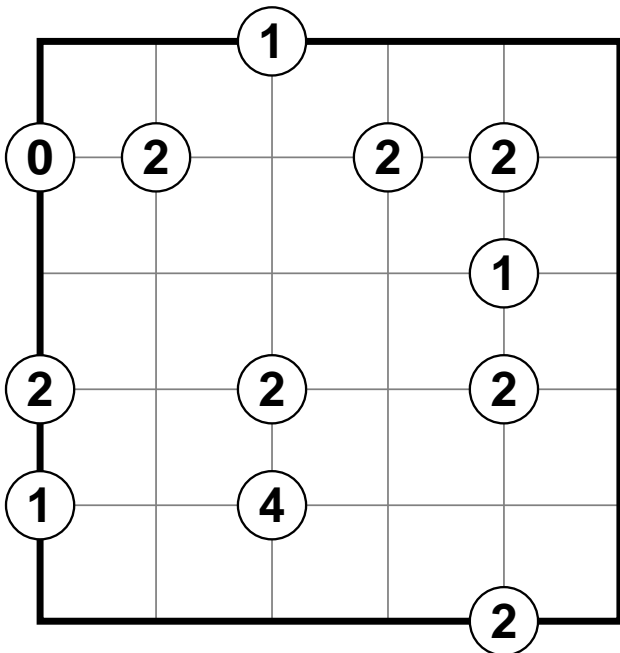
#1



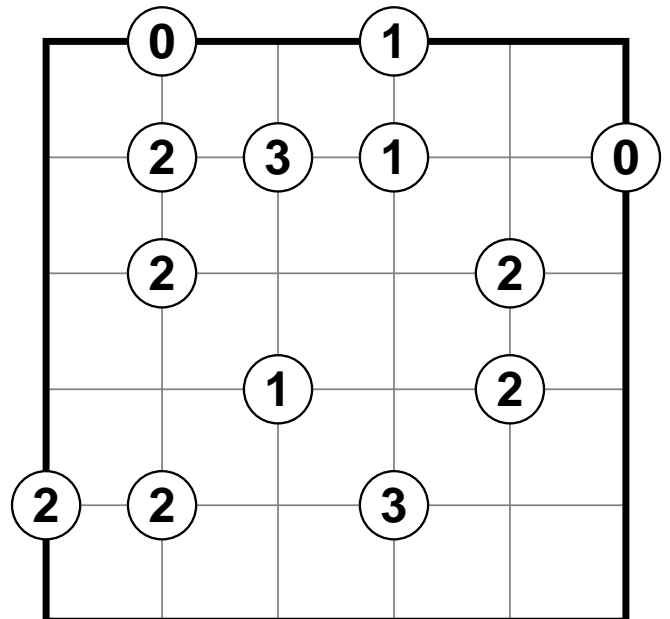
#2



#3



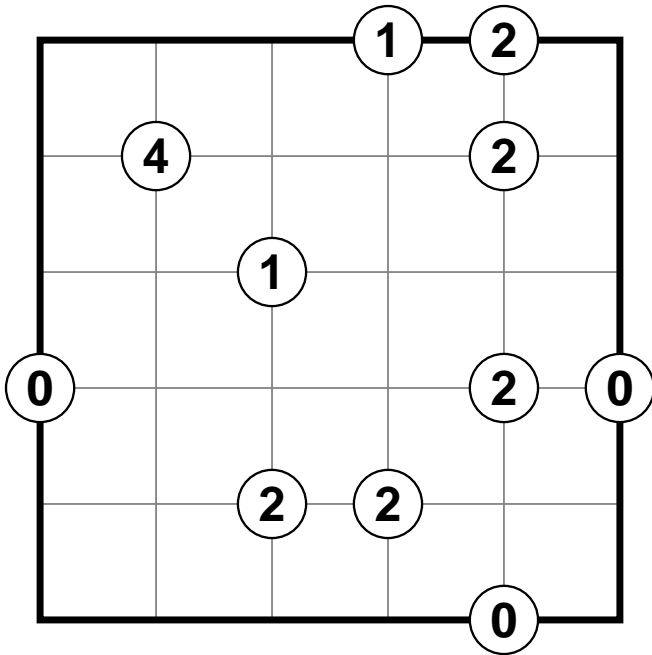
#4



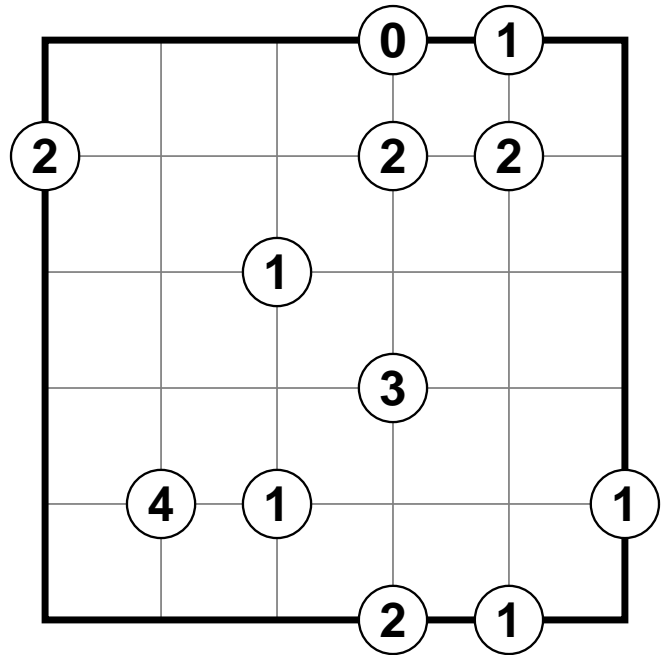
Fill each cell with a diagonal line (/ or \). The numbers at the intersections indicate how many diagonals touch that corner. The diagonal lines must not form a closed loop.

Zigzag Puzzles

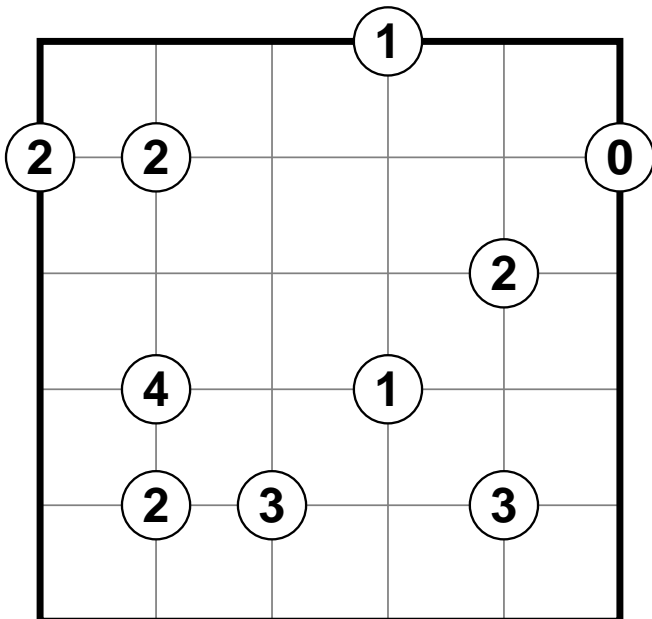
#5



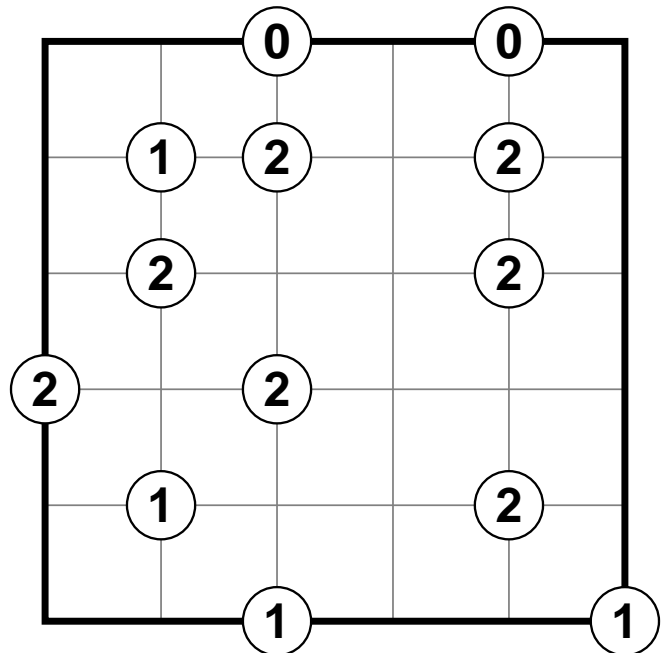
#6



#7



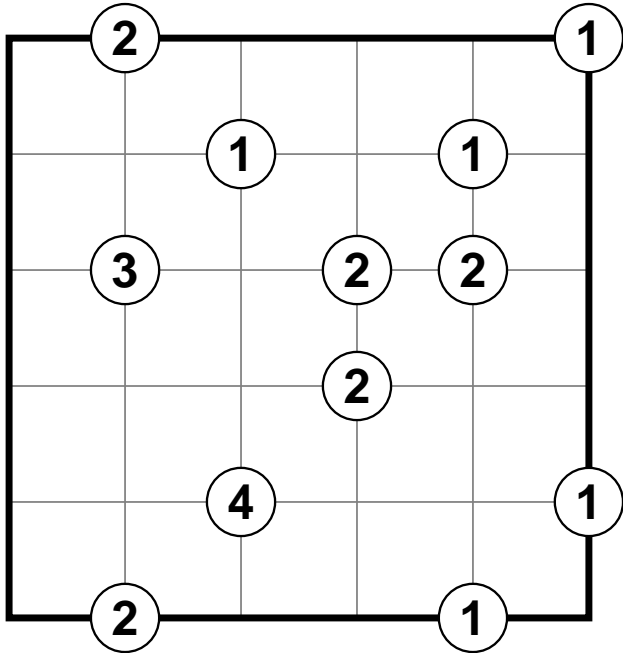
#8



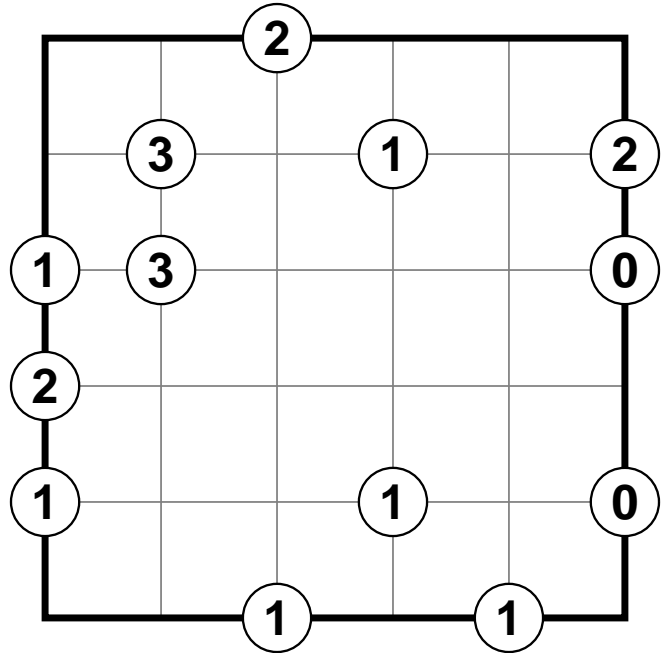
Fill each cell with a diagonal line (/ or \). The numbers at the intersections indicate how many diagonals touch that corner. The diagonal lines must not form a closed loop.

Zigzag Puzzles

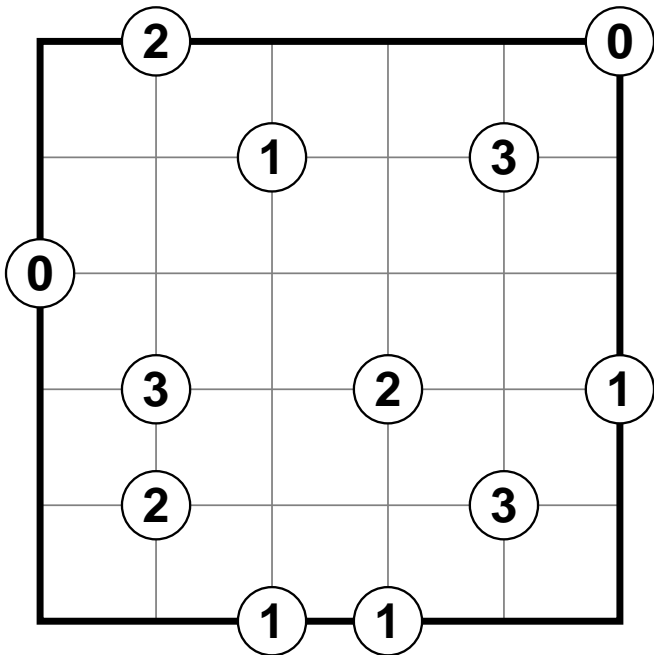
#9



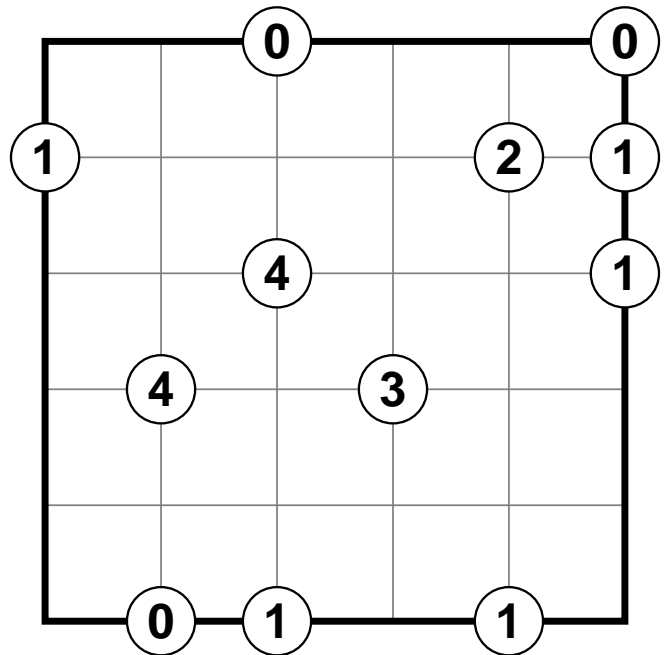
#10



#11



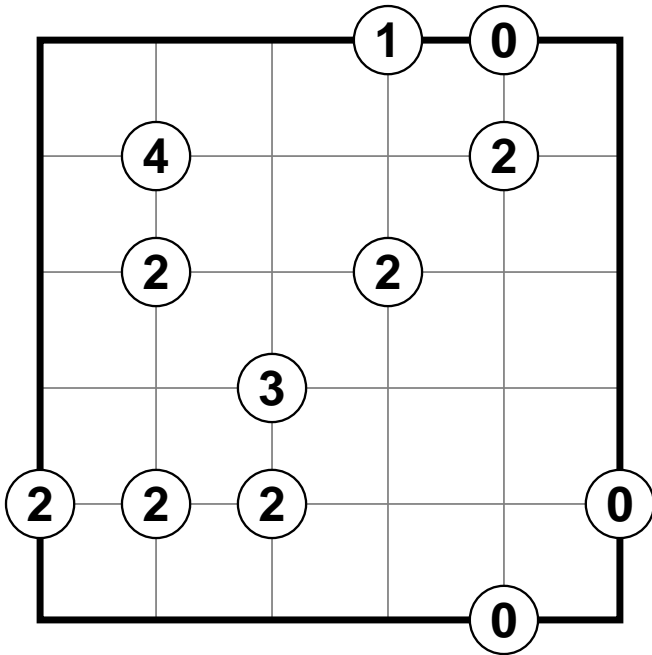
#12



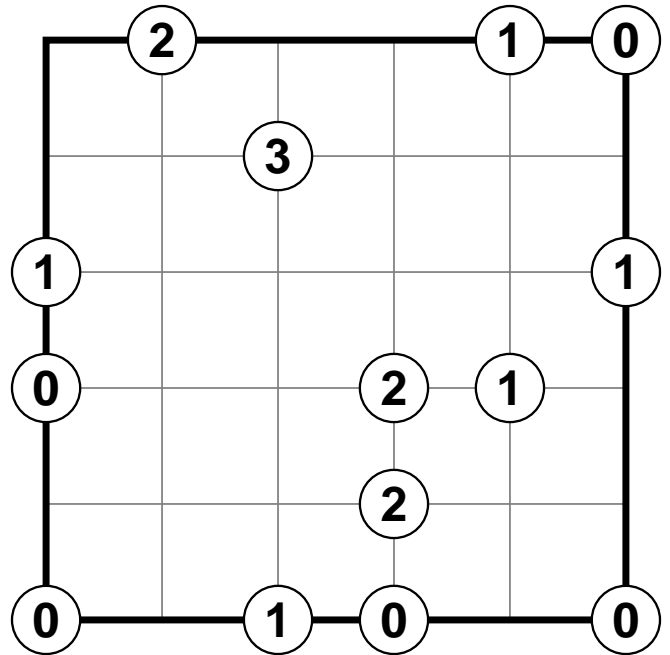
Fill each cell with a diagonal line (/ or \). The numbers at the intersections indicate how many diagonals touch that corner. The diagonal lines must not form a closed loop.

Zigzag Puzzles

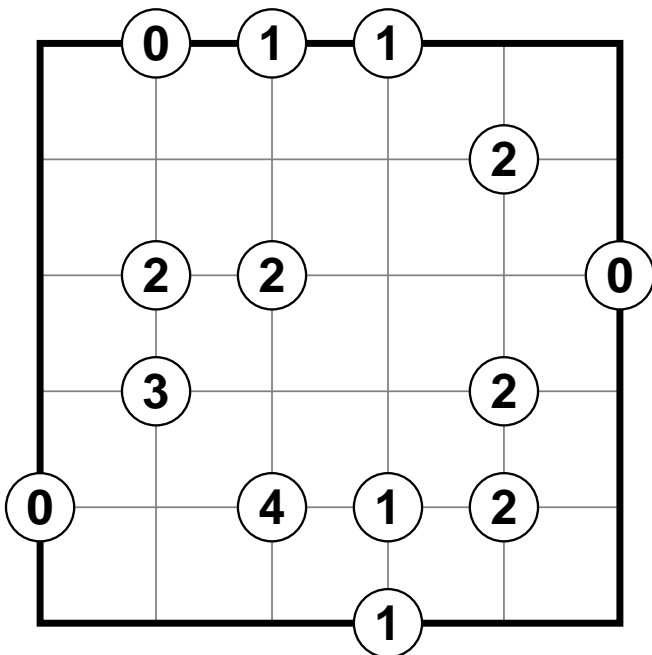
#13



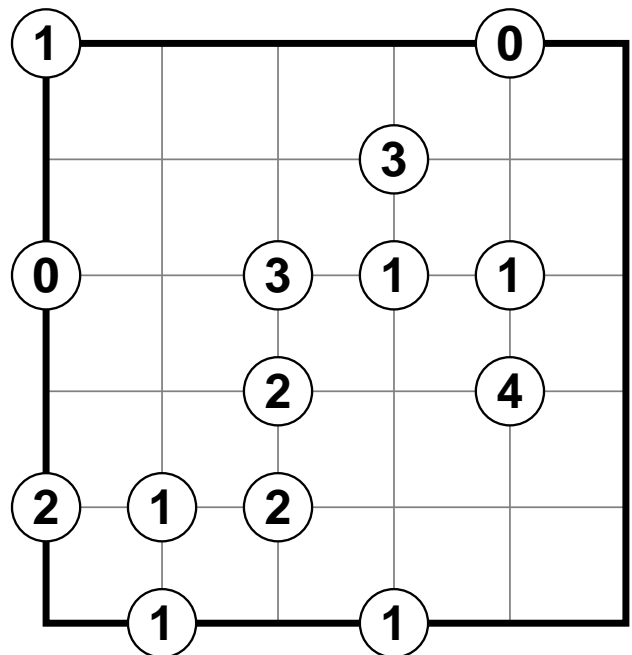
#14



#15



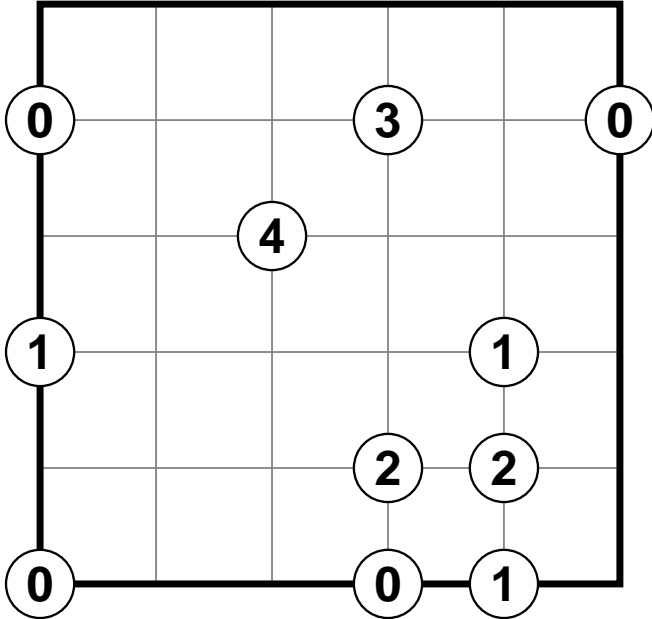
#16



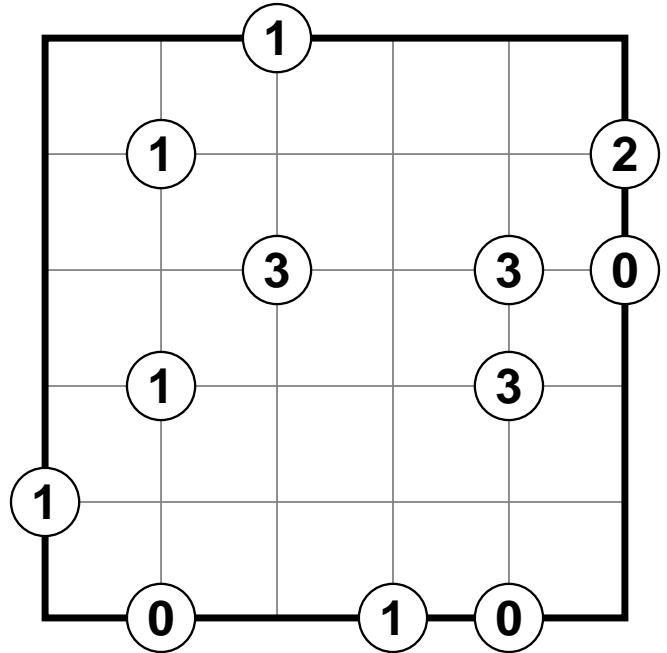
Fill each cell with a diagonal line (/ or \). The numbers at the intersections indicate how many diagonals touch that corner. The diagonal lines must not form a closed loop.

Zigzag Puzzles

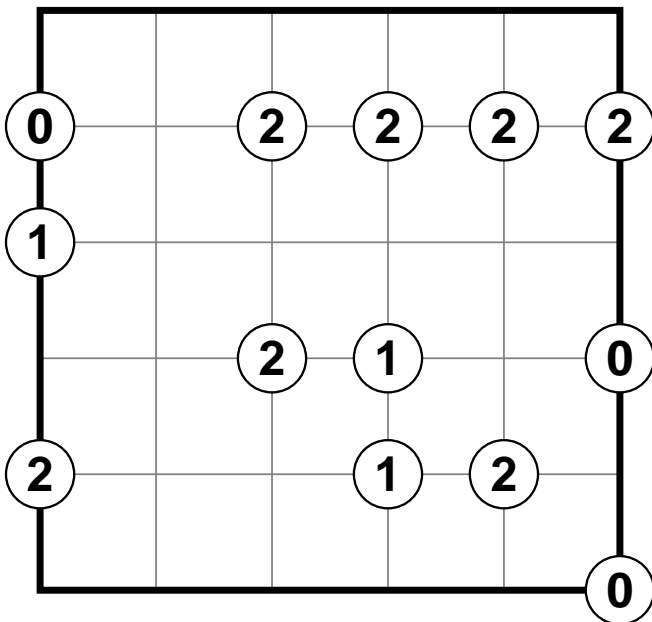
#17



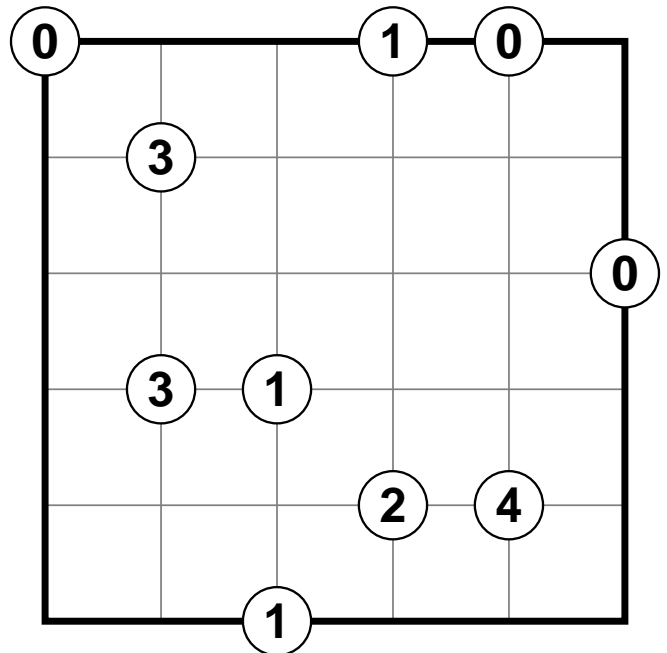
#18



#19



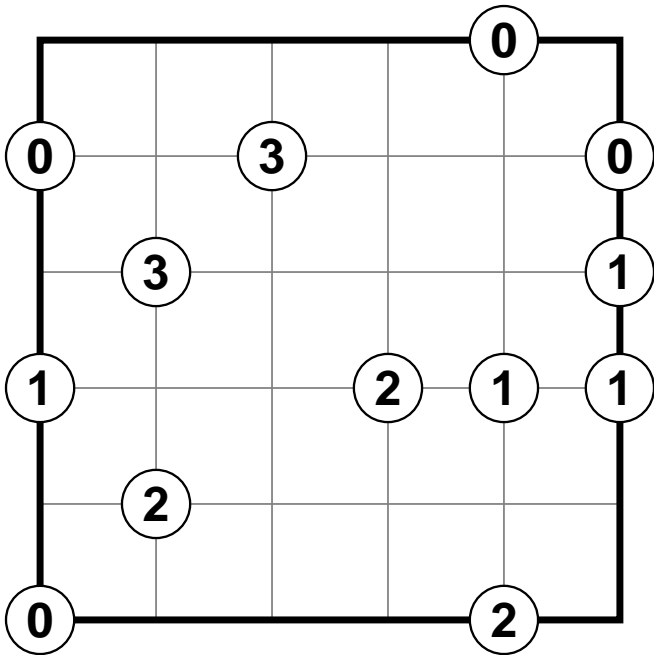
#20



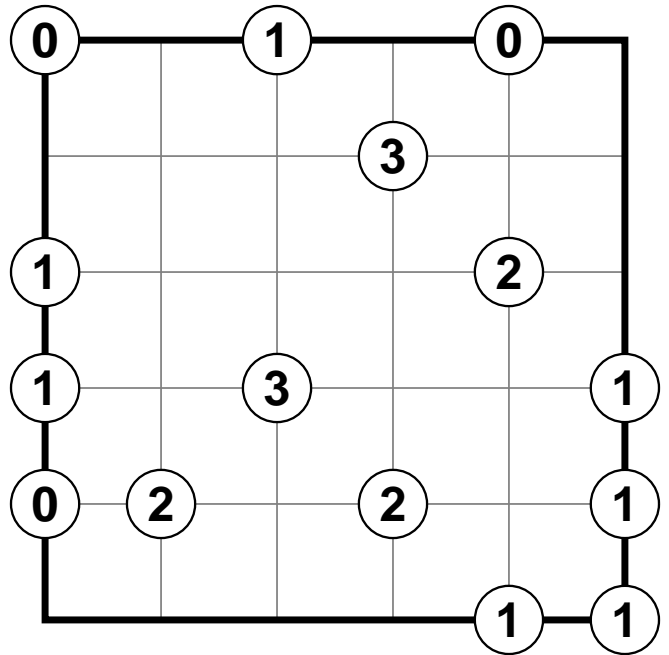
Fill each cell with a diagonal line (/ or \). The numbers at the intersections indicate how many diagonals touch that corner. The diagonal lines must not form a closed loop.

Zigzag Puzzles

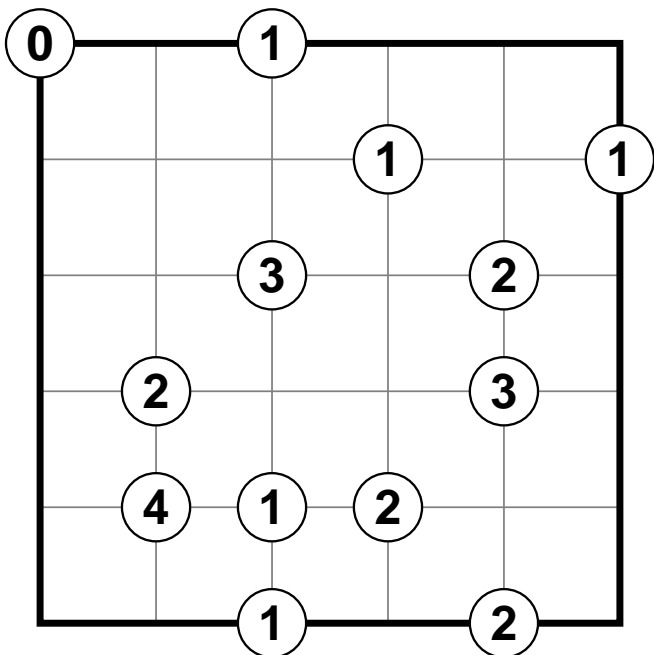
#21



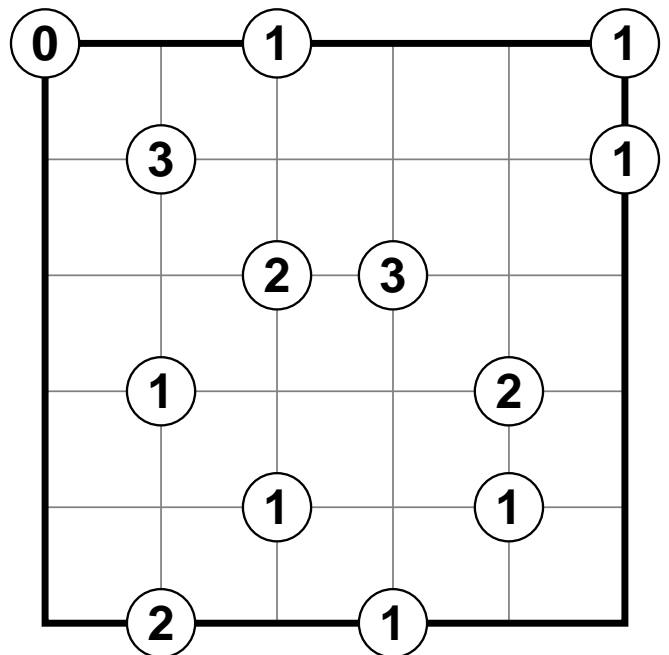
#22



#23



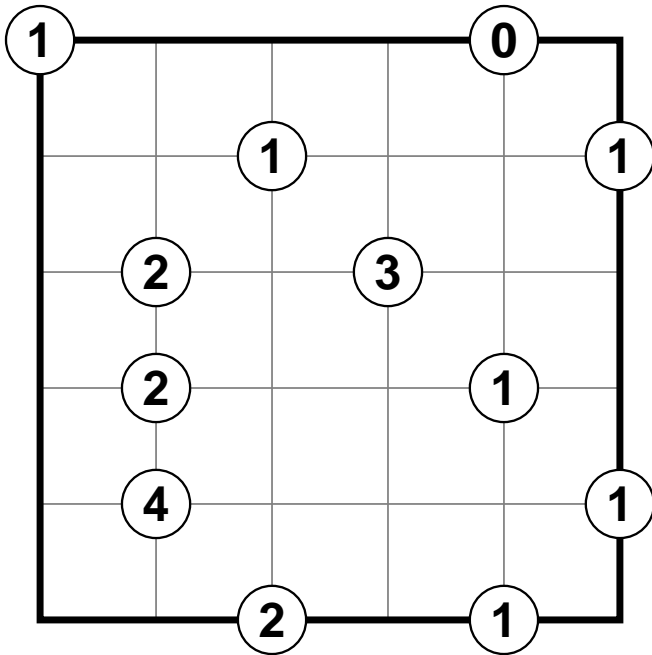
#24



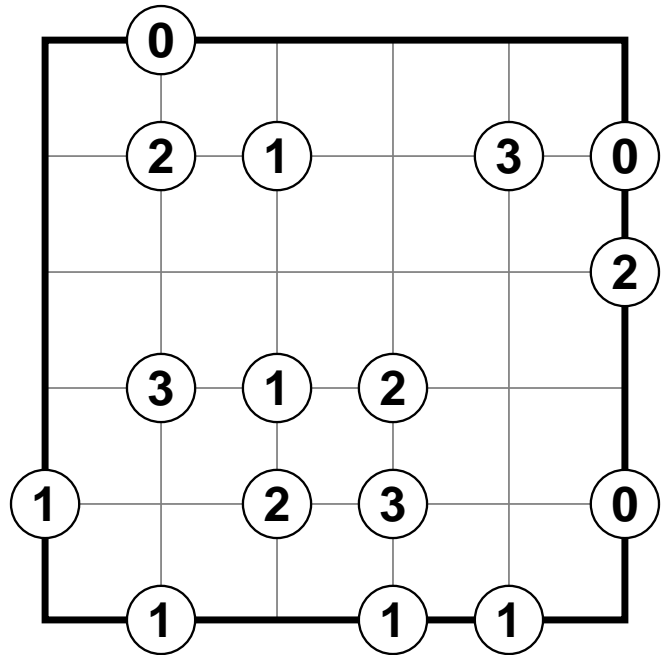
Fill each cell with a diagonal line (/ or \). The numbers at the intersections indicate how many diagonals touch that corner. The diagonal lines must not form a closed loop.

Zigzag Puzzles

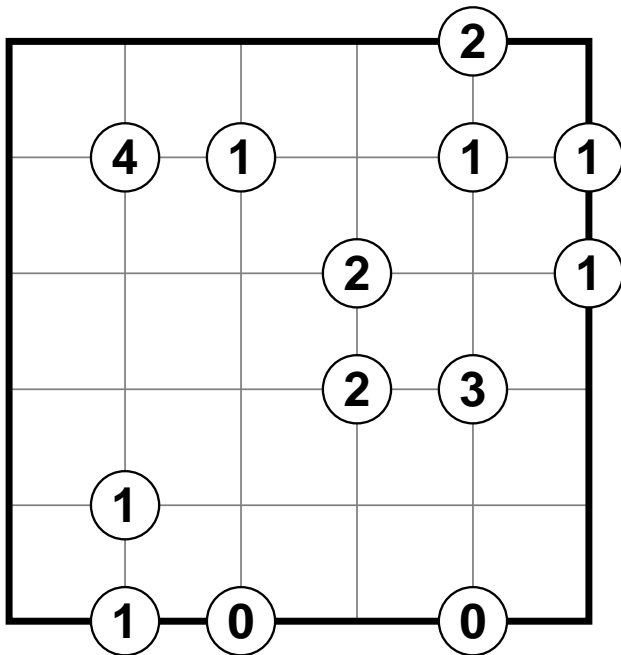
#25



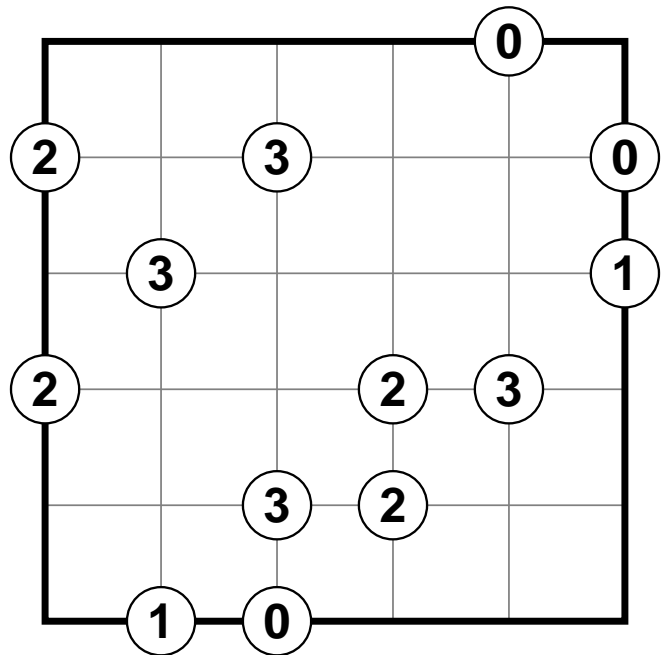
#26



#27



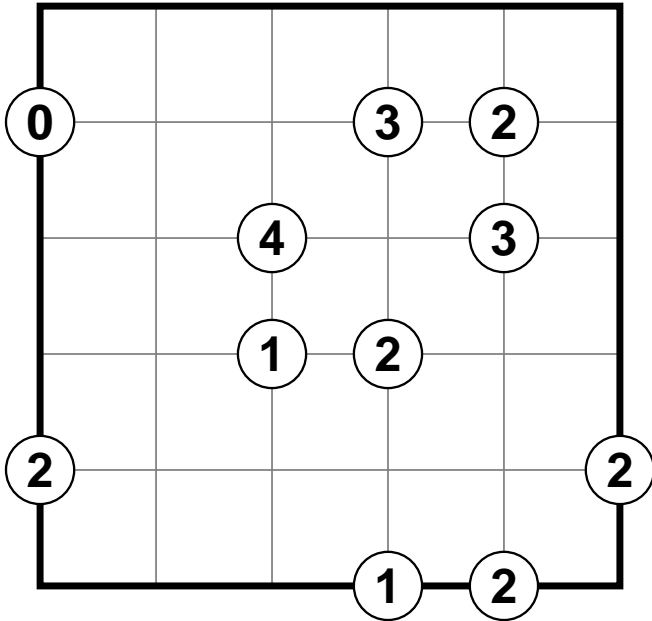
#28



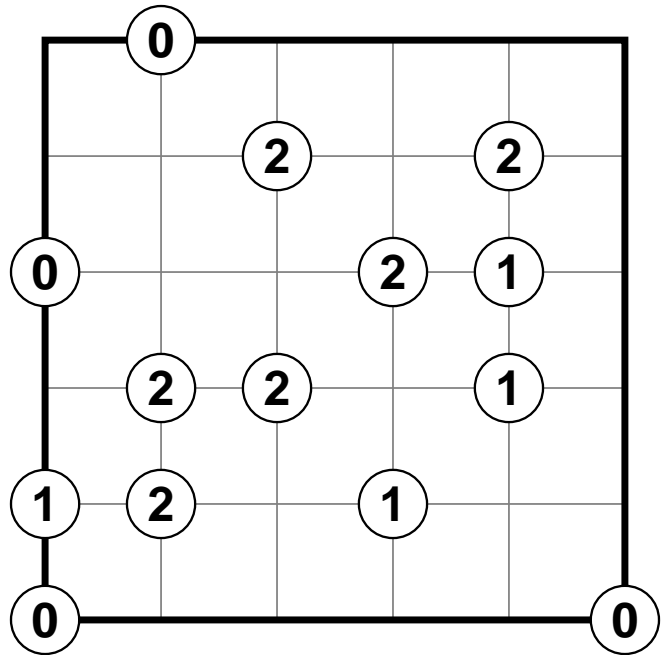
Fill each cell with a diagonal line (/ or \). The numbers at the intersections indicate how many diagonals touch that corner. The diagonal lines must not form a closed loop.

Zigzag Puzzles

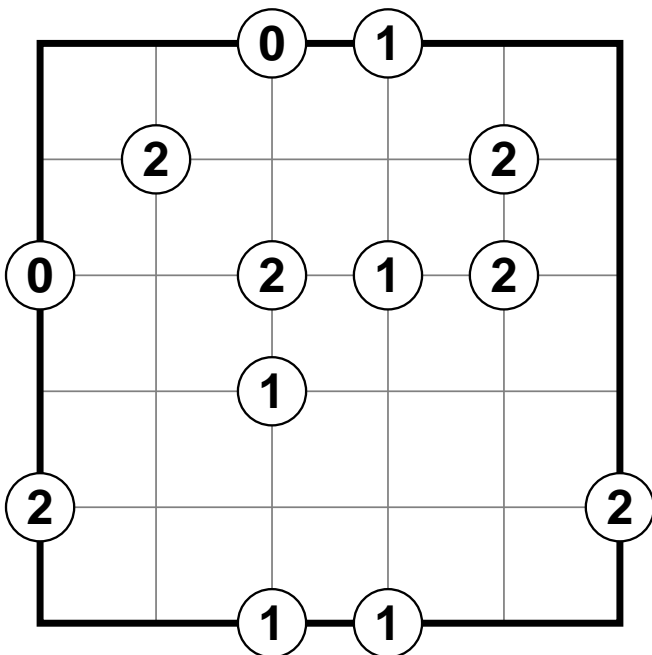
#29



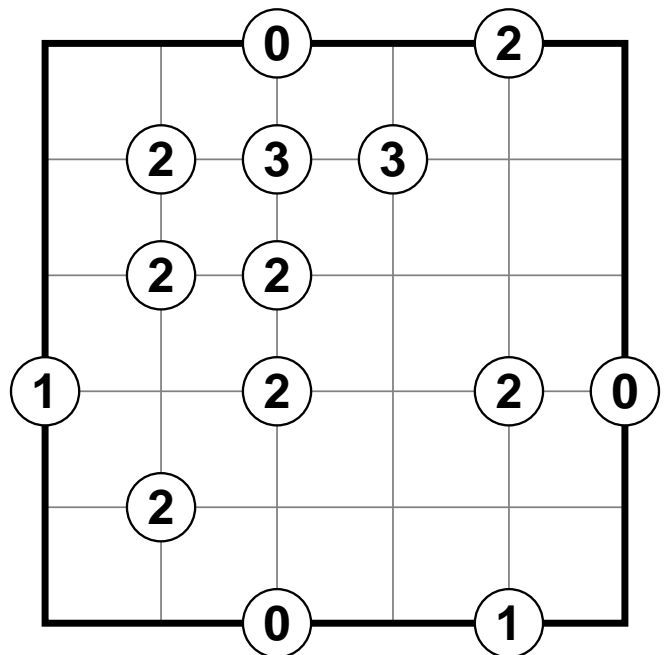
#30



#31



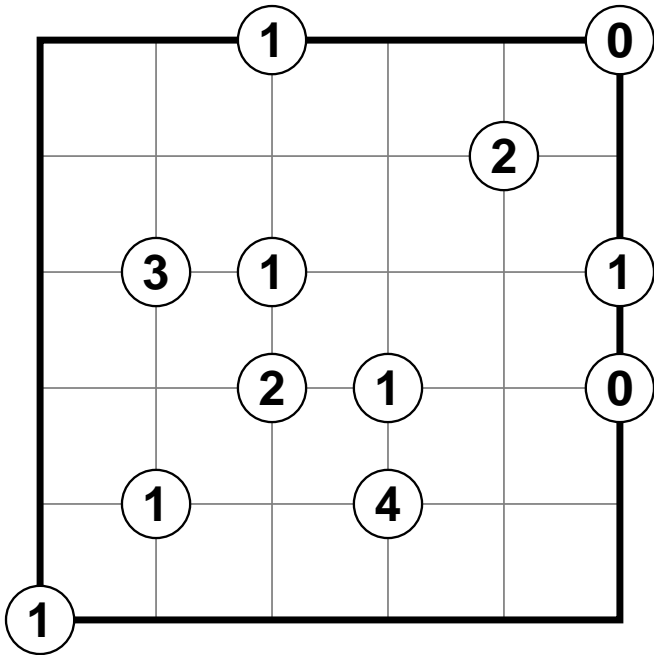
#32



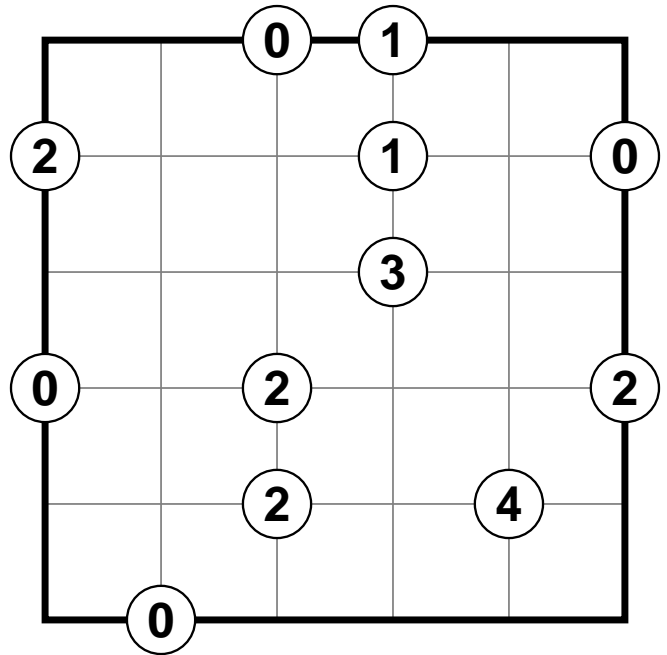
Fill each cell with a diagonal line (/ or \). The numbers at the intersections indicate how many diagonals touch that corner. The diagonal lines must not form a closed loop.

Zigzag Puzzles

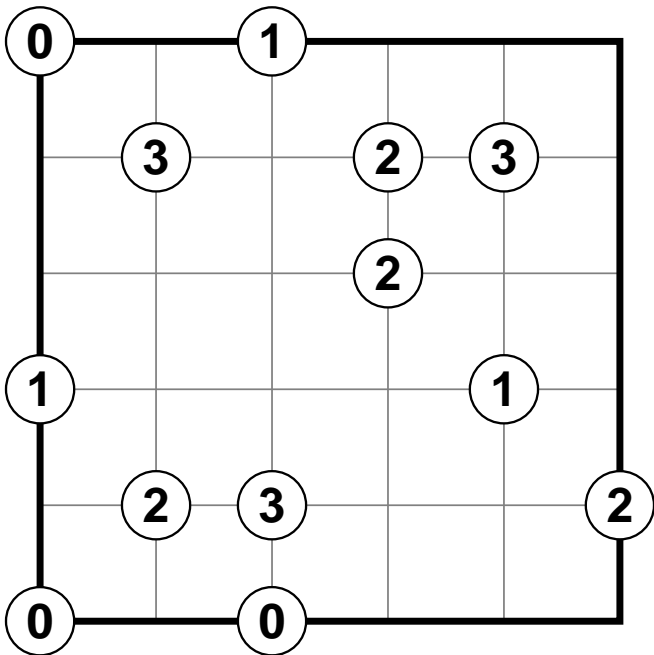
#33



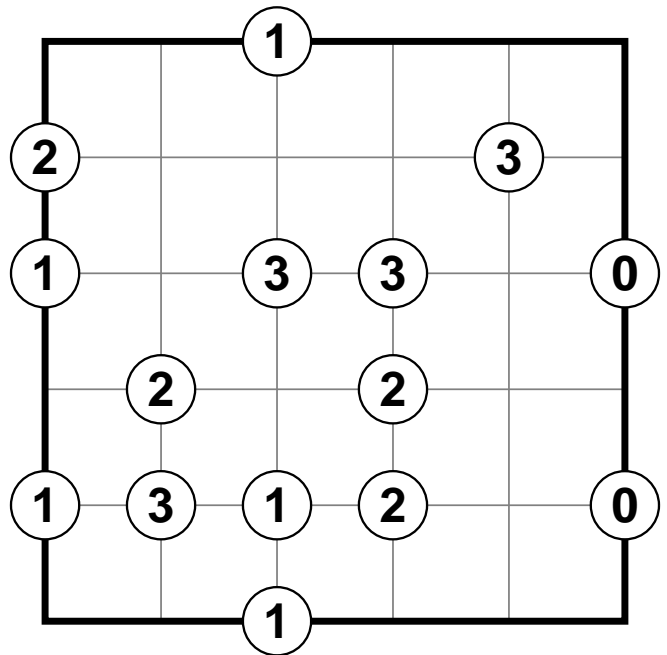
#34



#35



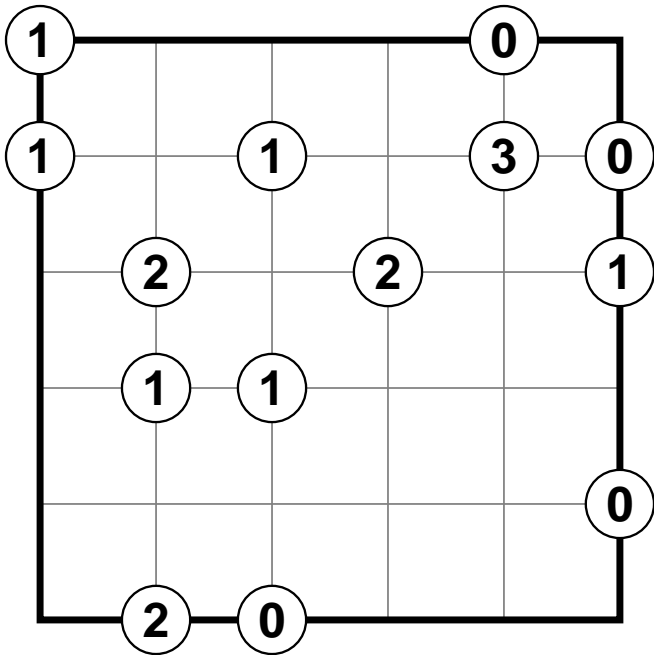
#36



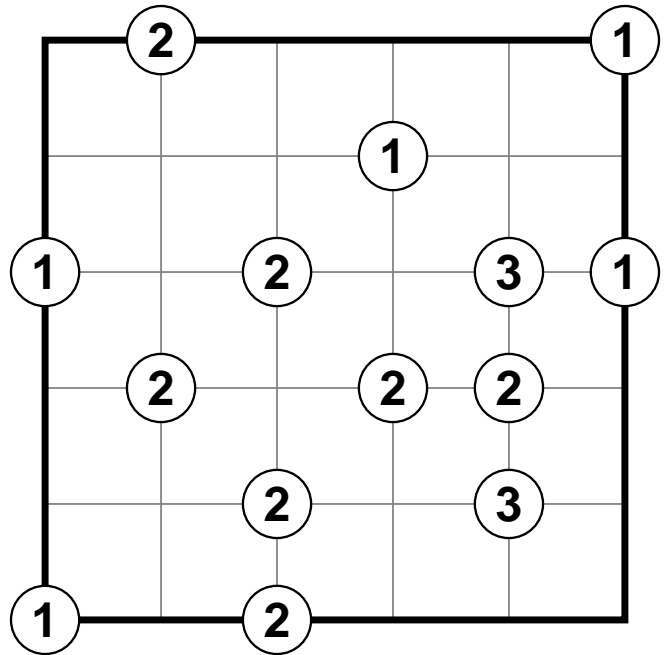
Fill each cell with a diagonal line (/ or \). The numbers at the intersections indicate how many diagonals touch that corner. The diagonal lines must not form a closed loop.

Zigzag Puzzles

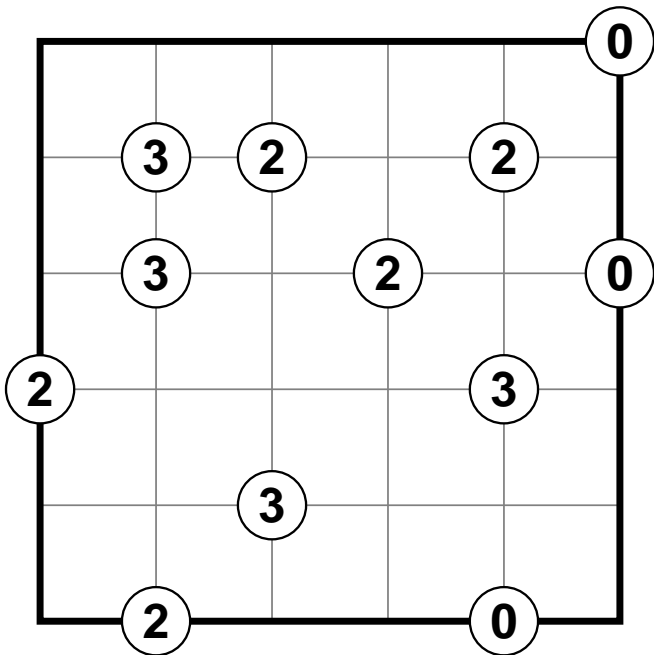
#37



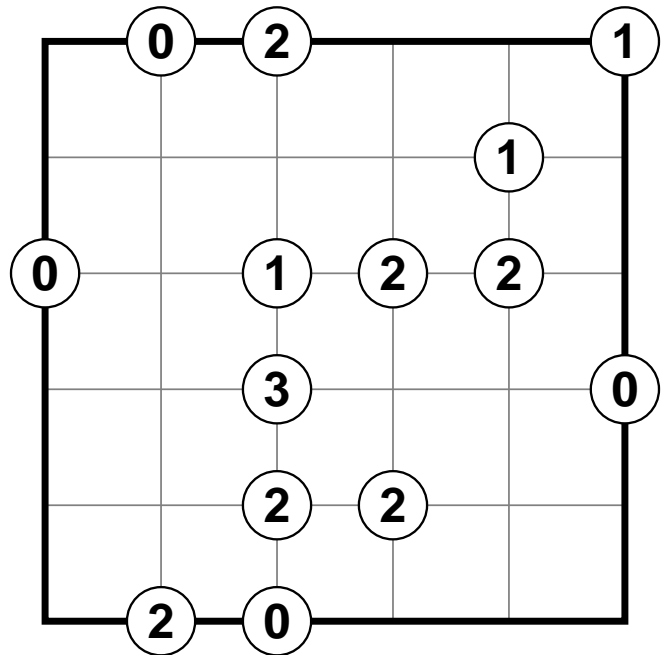
#38



#39



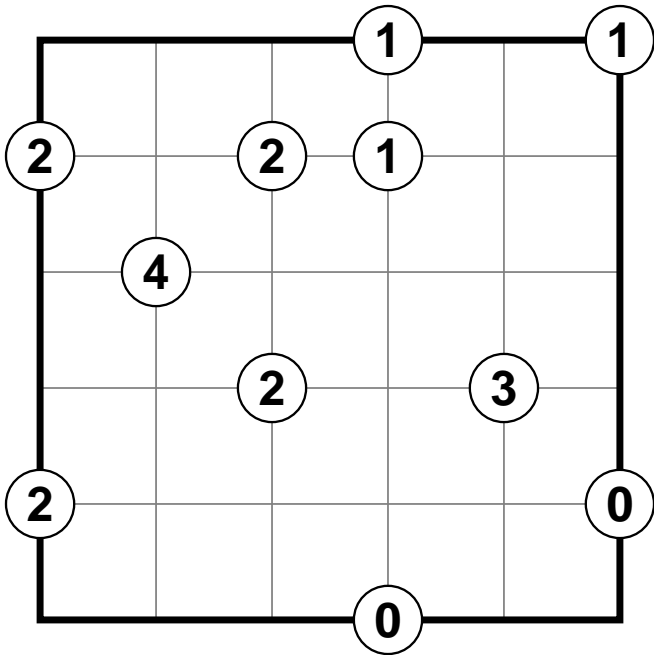
#40



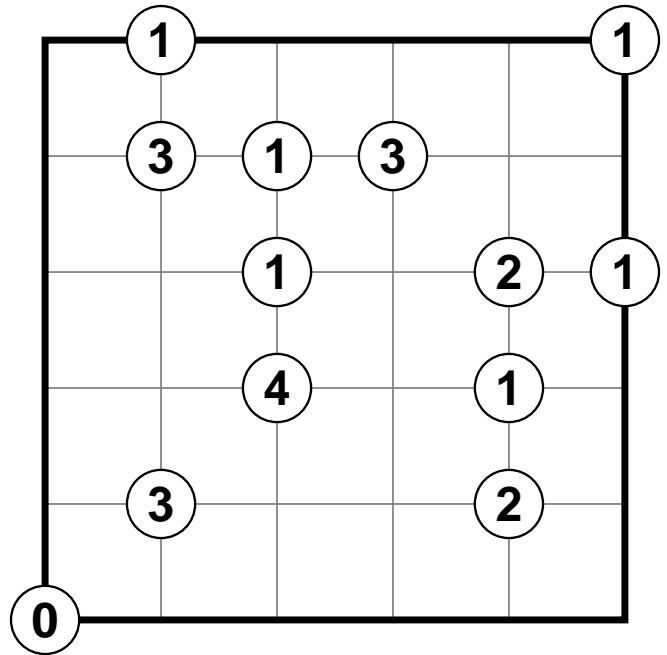
Fill each cell with a diagonal line (/ or \). The numbers at the intersections indicate how many diagonals touch that corner. The diagonal lines must not form a closed loop.

Zigzag Puzzles

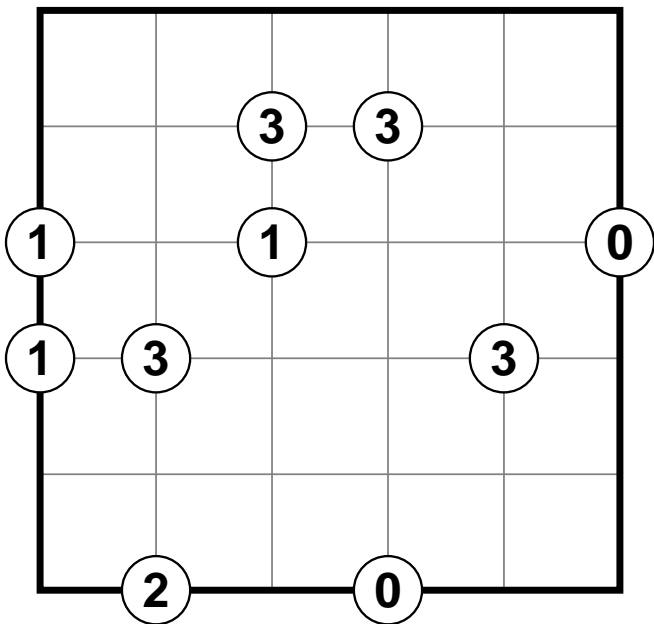
#41



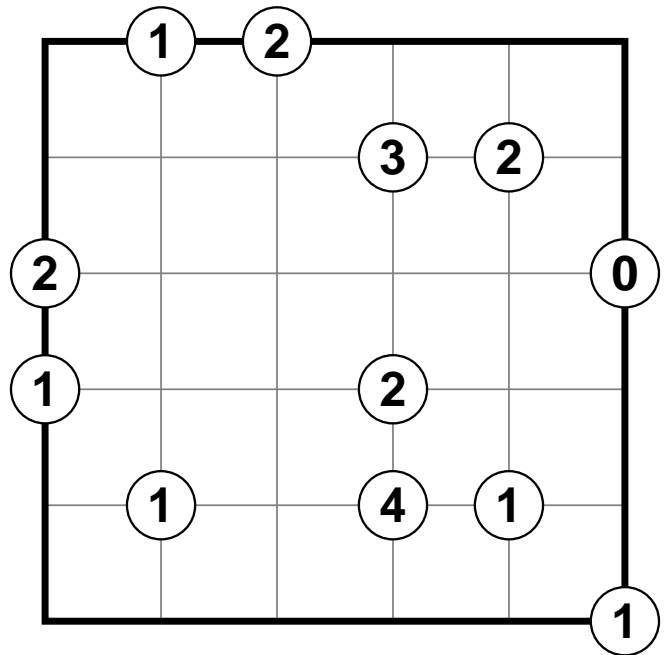
#42



#43



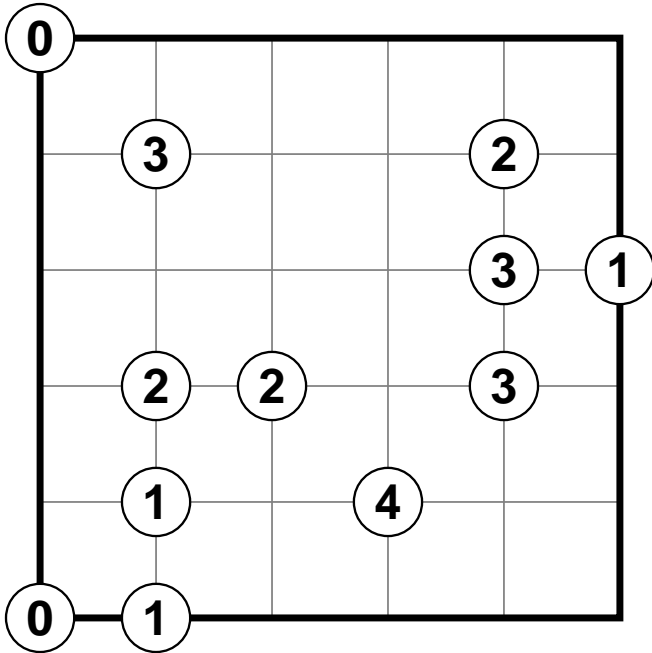
#44



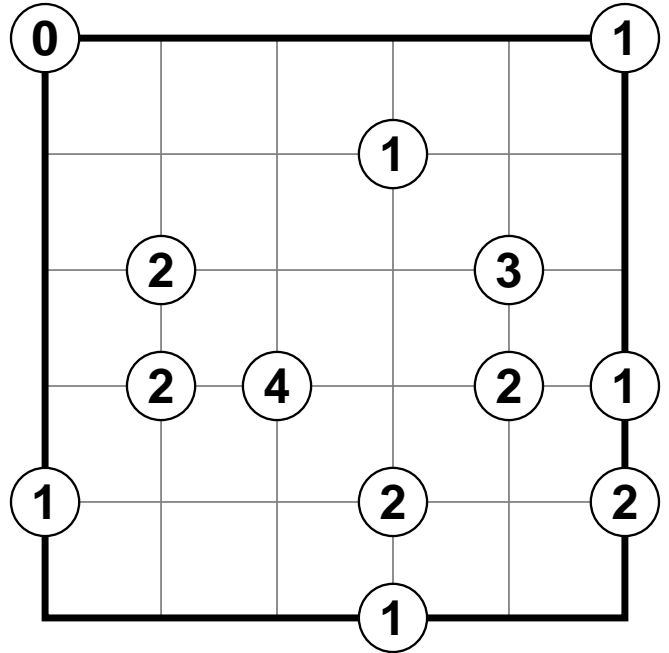
Fill each cell with a diagonal line (/ or \). The numbers at the intersections indicate how many diagonals touch that corner. The diagonal lines must not form a closed loop.

Zigzag Puzzles

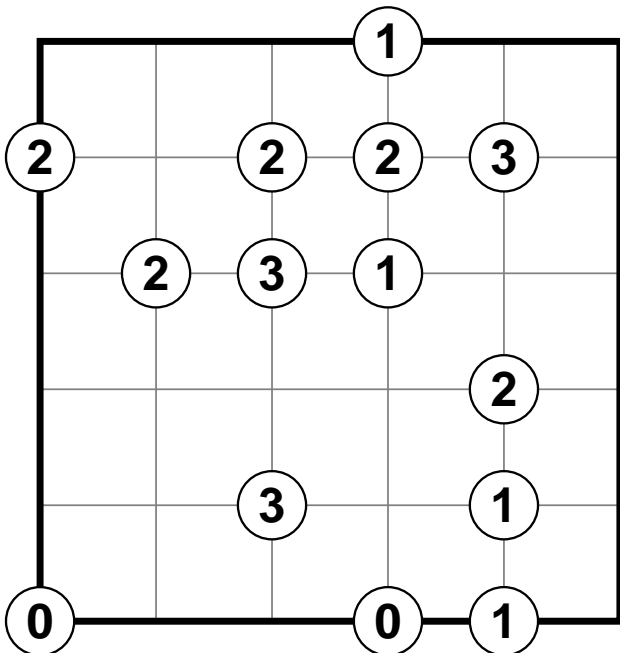
#45



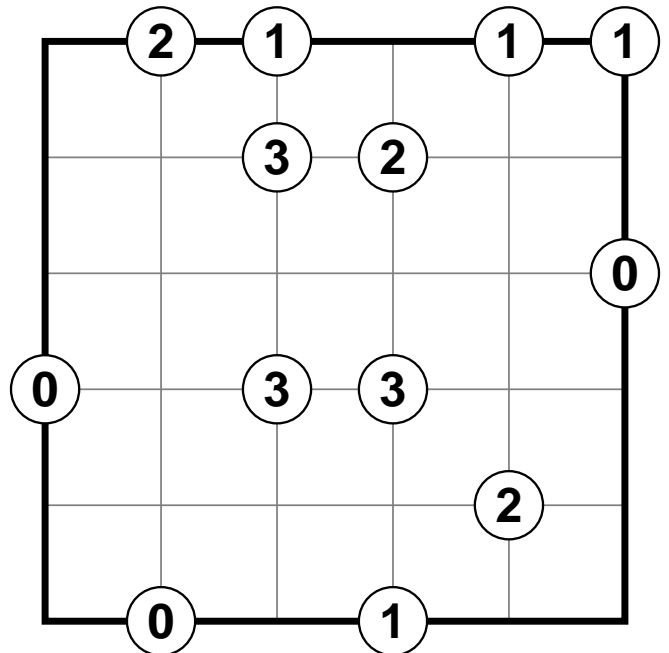
#46



#47



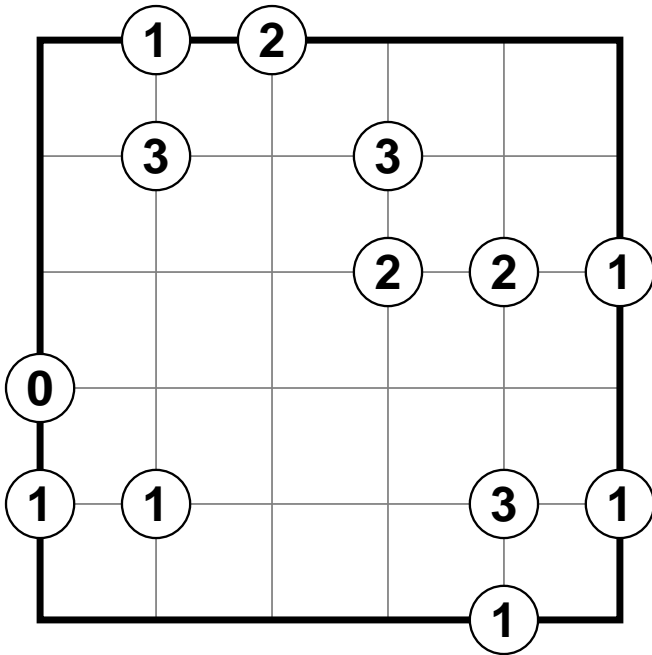
#48



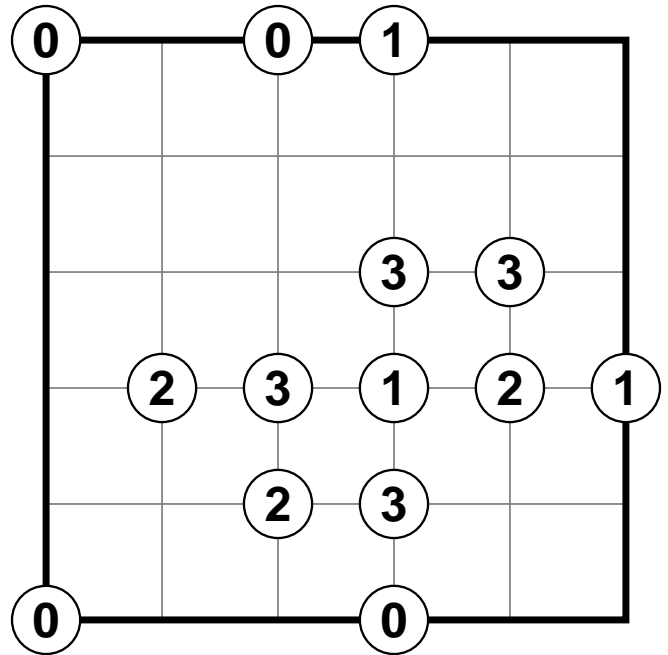
Fill each cell with a diagonal line (/ or \). The numbers at the intersections indicate how many diagonals touch that corner. The diagonal lines must not form a closed loop.

Zigzag Puzzles

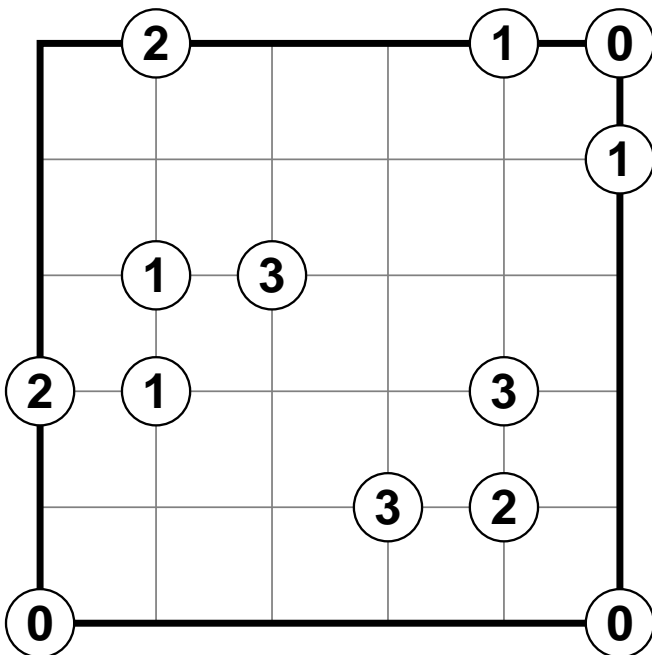
#49



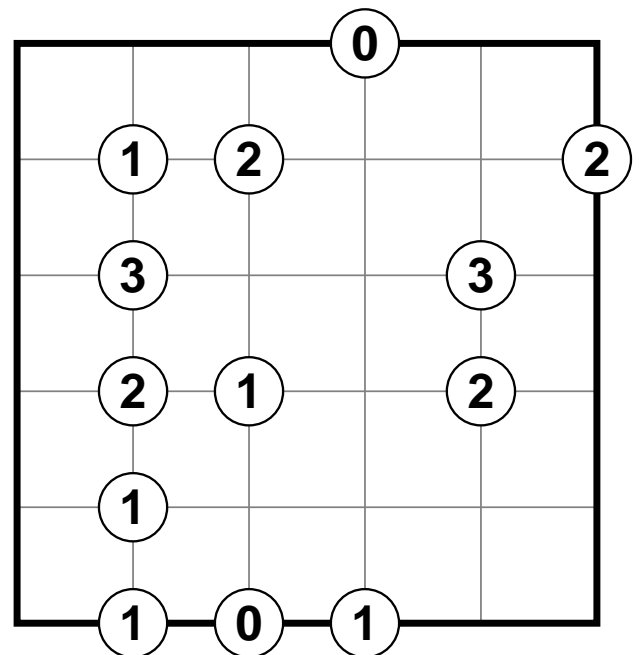
#50



#51



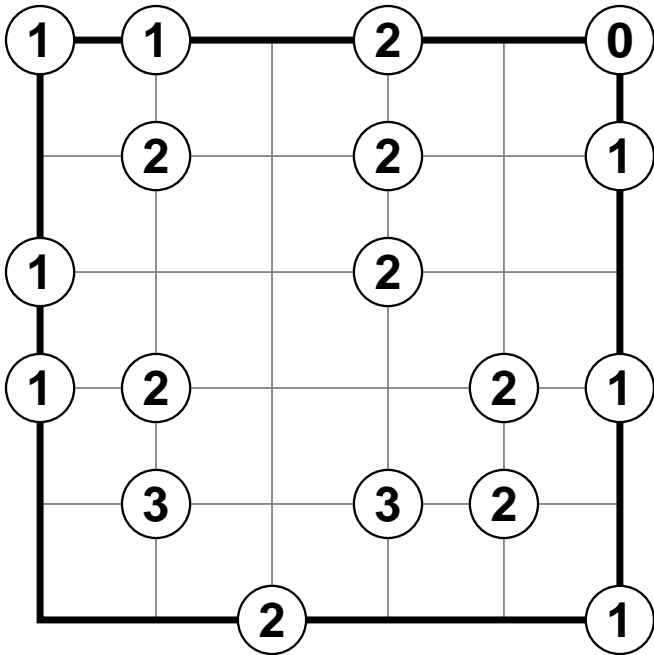
#52



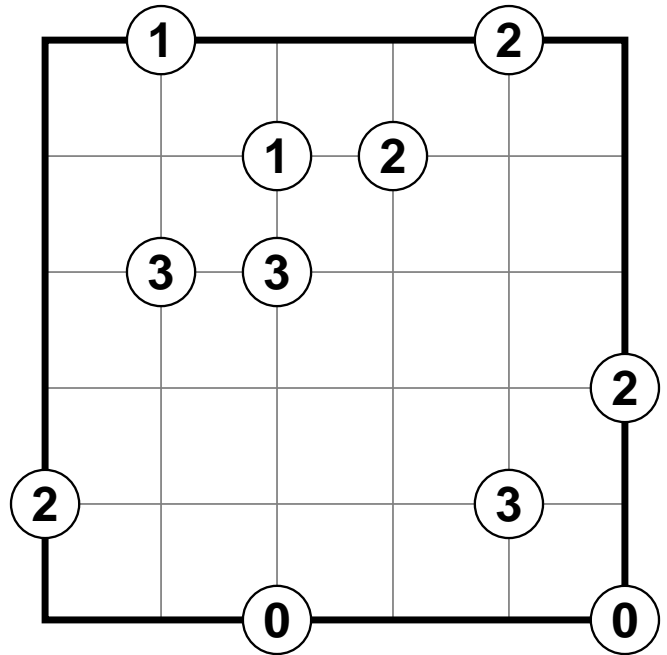
Fill each cell with a diagonal line (/ or \). The numbers at the intersections indicate how many diagonals touch that corner. The diagonal lines must not form a closed loop.

Zigzag Puzzles

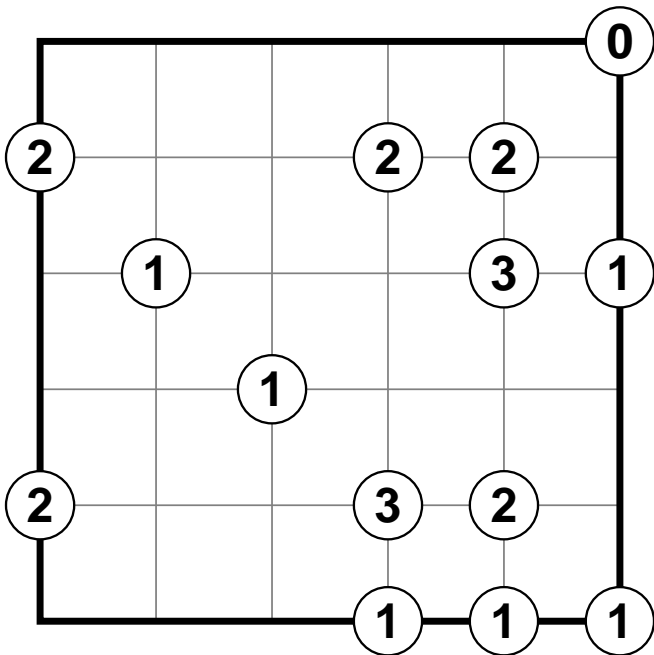
#53



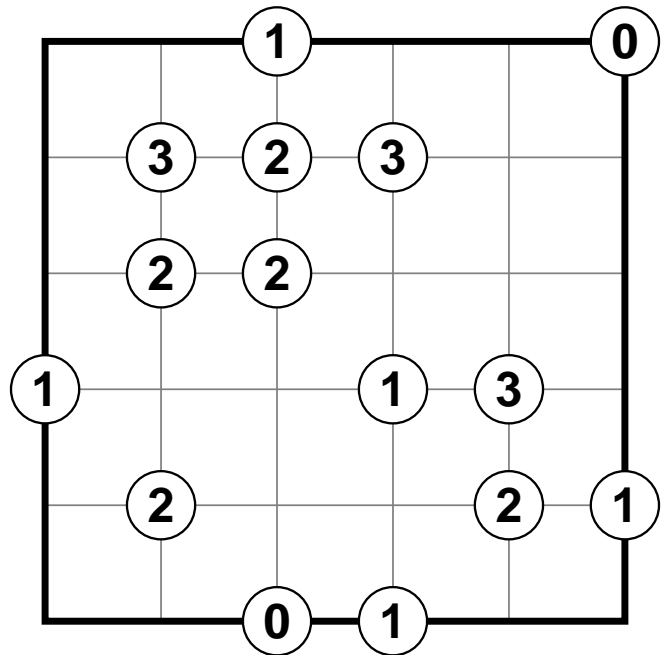
#54



#55



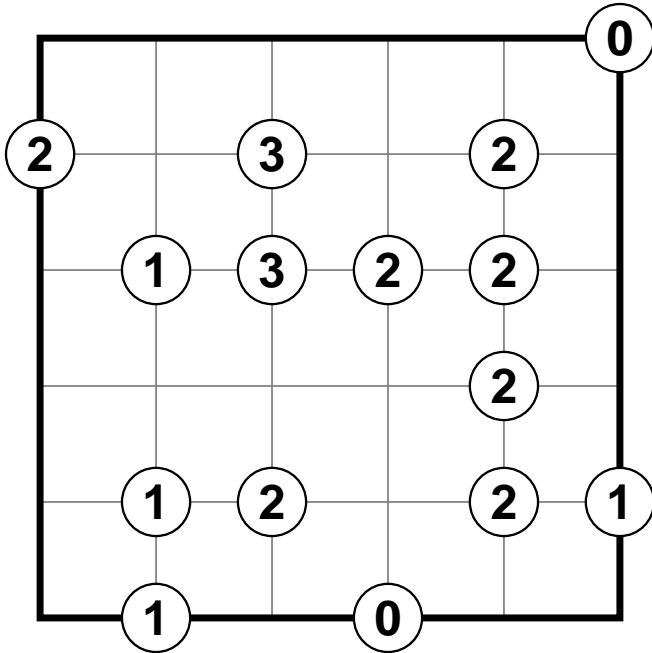
#56



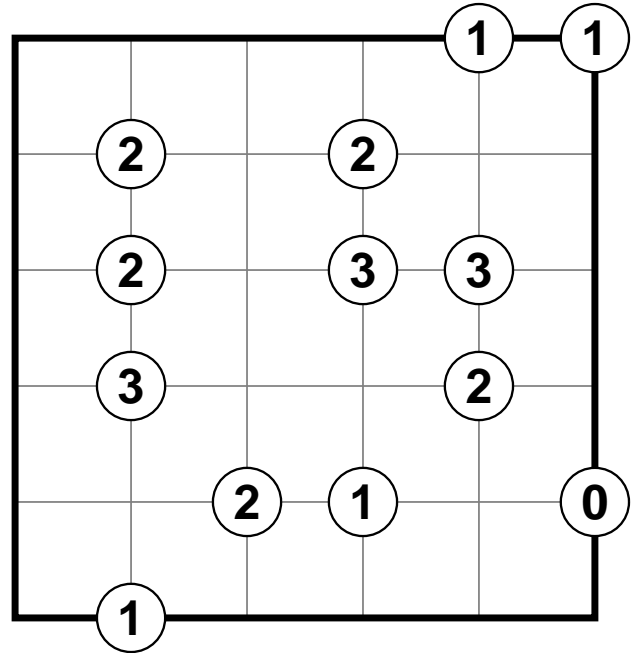
Fill each cell with a diagonal line (/ or \). The numbers at the intersections indicate how many diagonals touch that corner. The diagonal lines must not form a closed loop.

Zigzag Puzzles

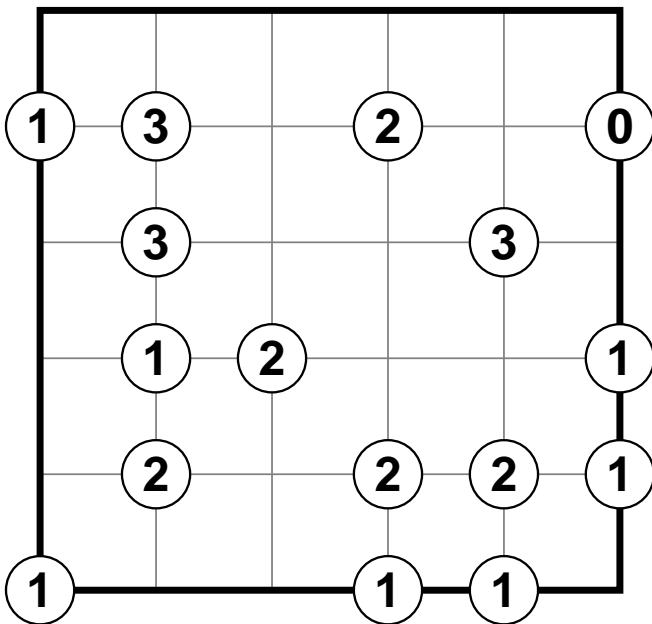
#57



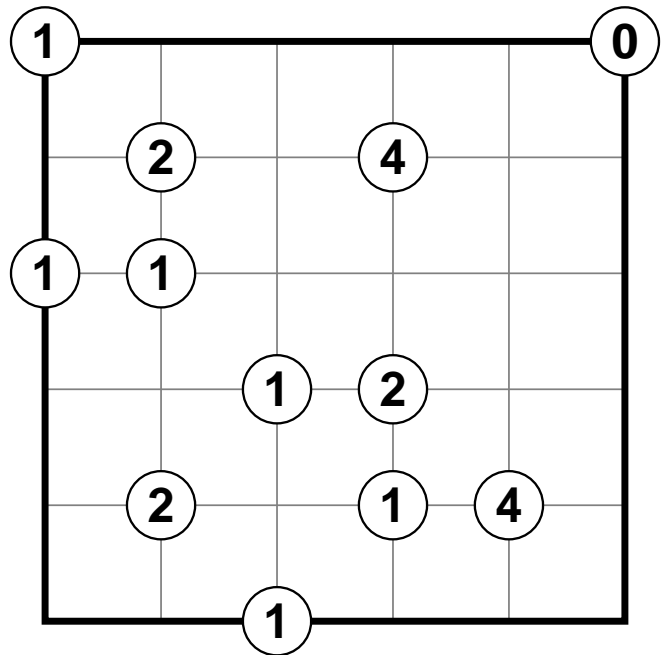
#58



#59

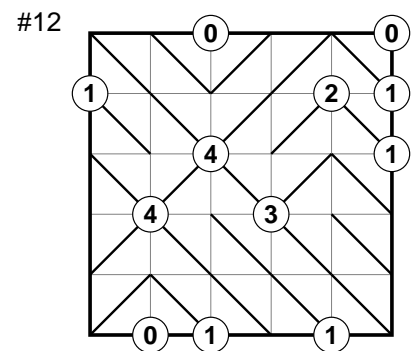
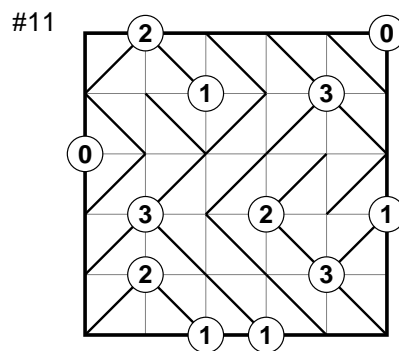
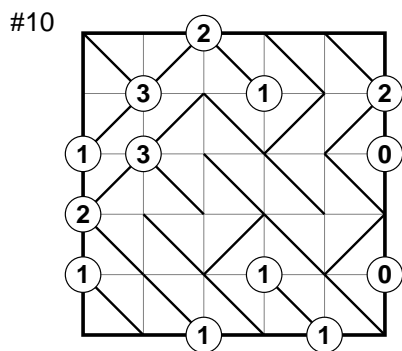
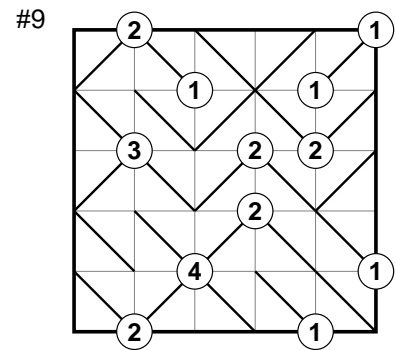
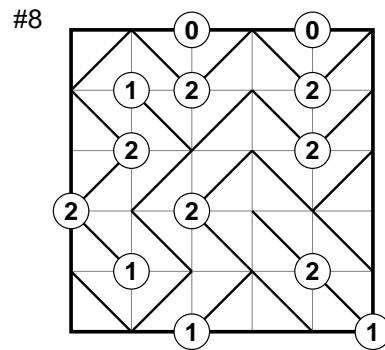
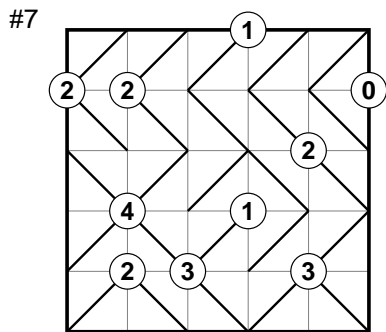
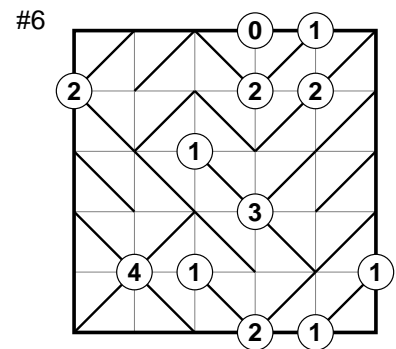
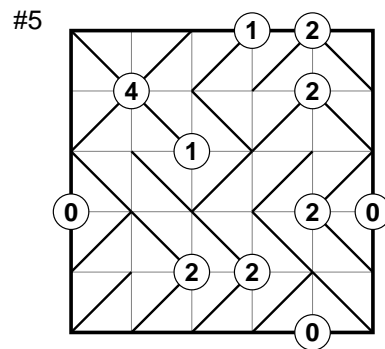
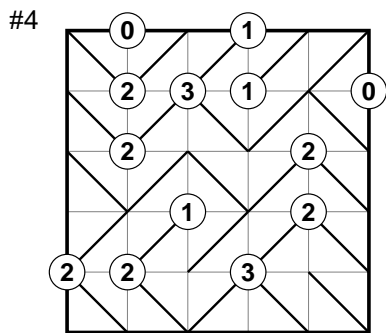
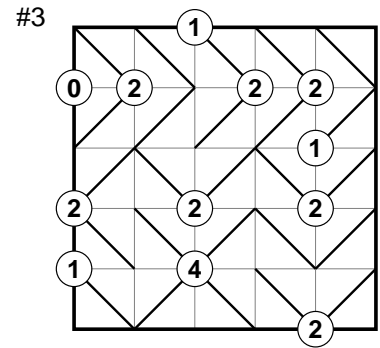
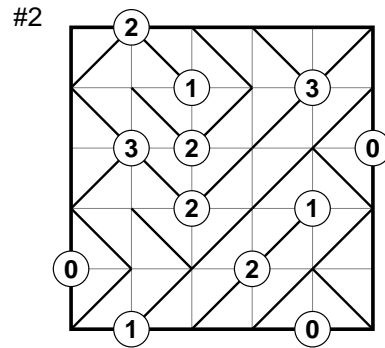
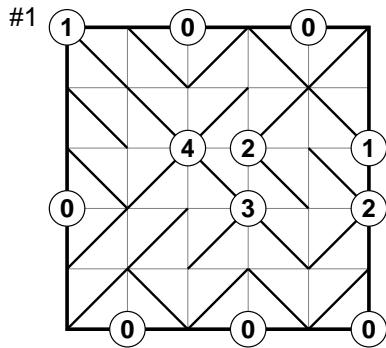


#60



Fill each cell with a diagonal line (/ or \). The numbers at the intersections indicate how many diagonals touch that corner. The diagonal lines must not form a closed loop.

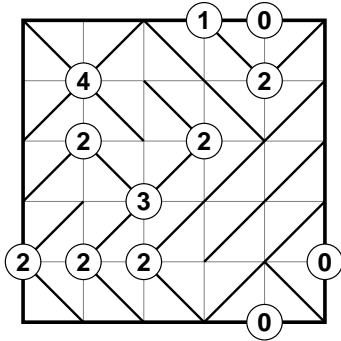
Zigzag Answers



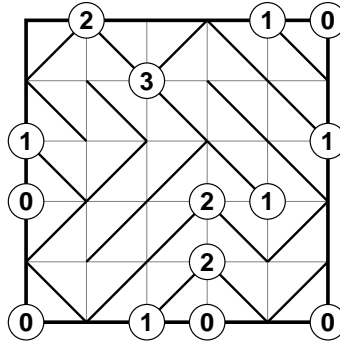
Fill each cell with a diagonal line (/ or \). The numbers at the intersections indicate how many diagonals touch that corner. The diagonal lines must not form a closed loop.

Zigzag Answers

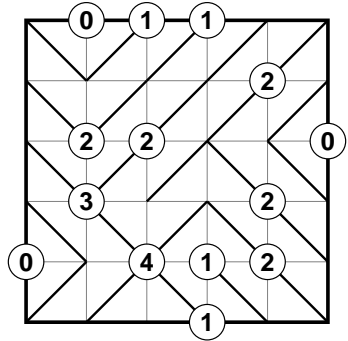
#13



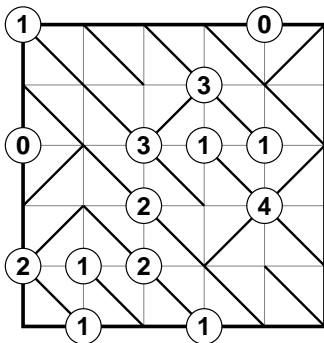
#14



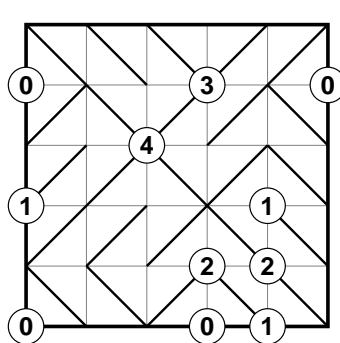
#15



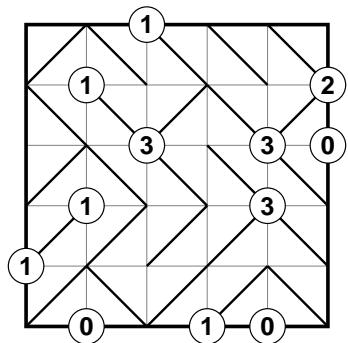
#16



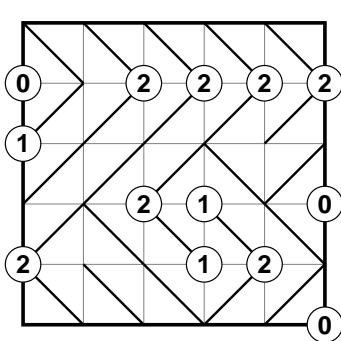
#17



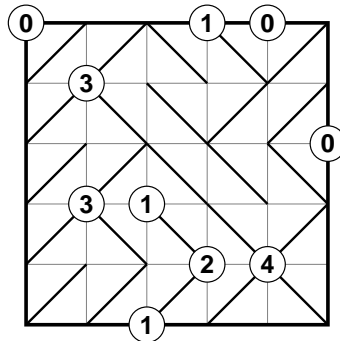
#18



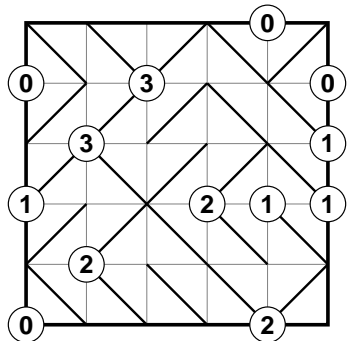
#19



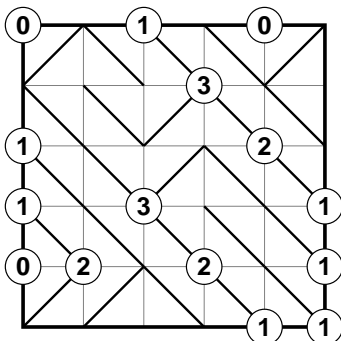
#20



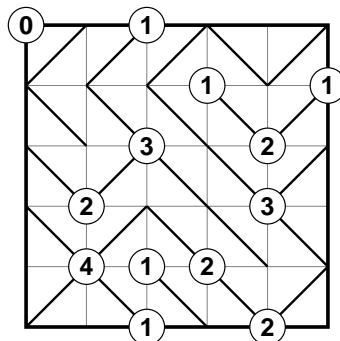
#21



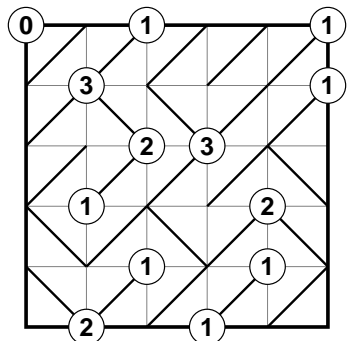
#22



#23

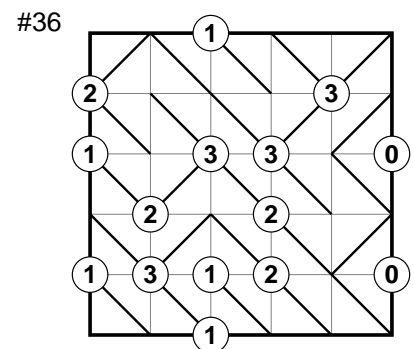
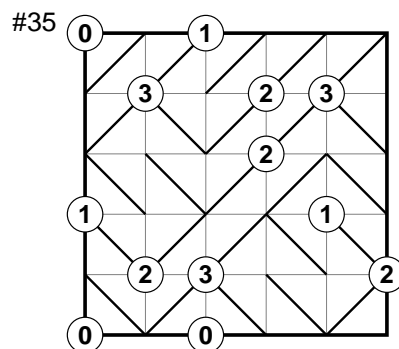
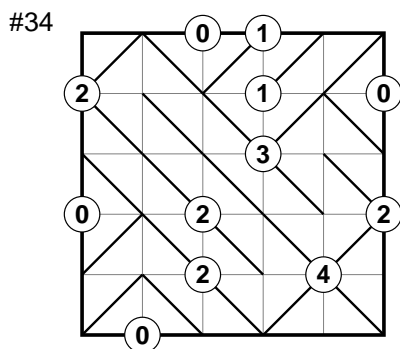
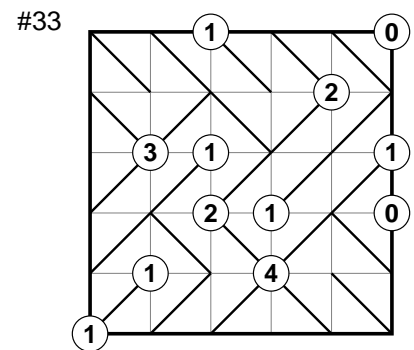
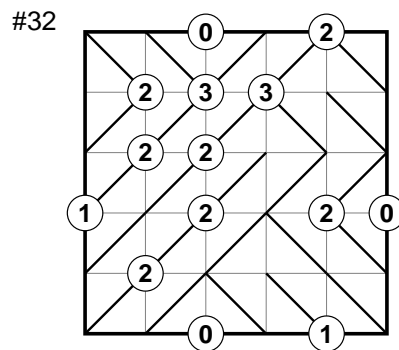
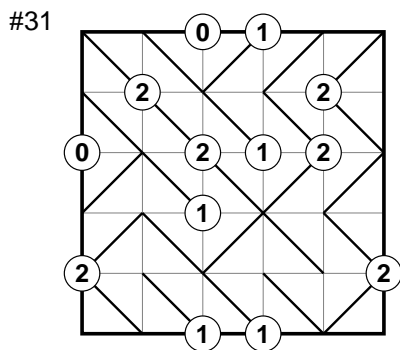
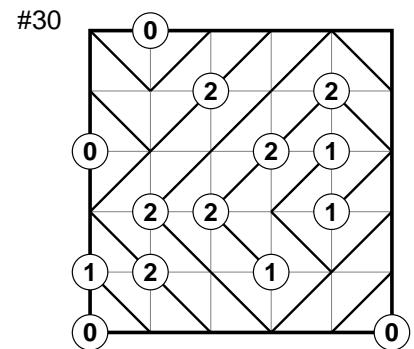
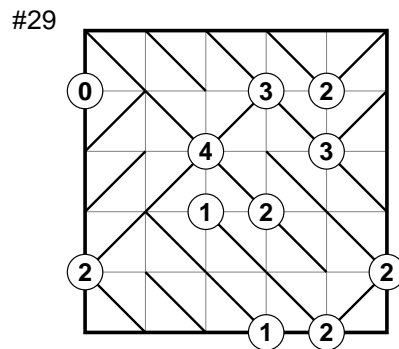
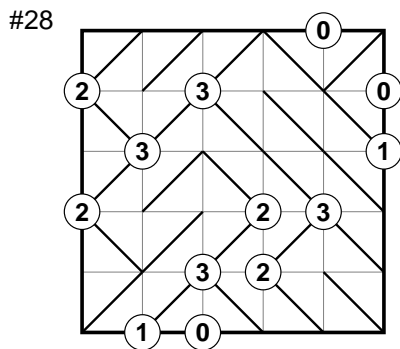
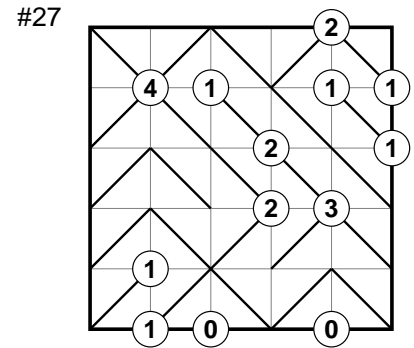
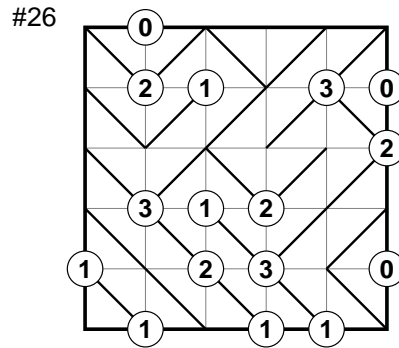
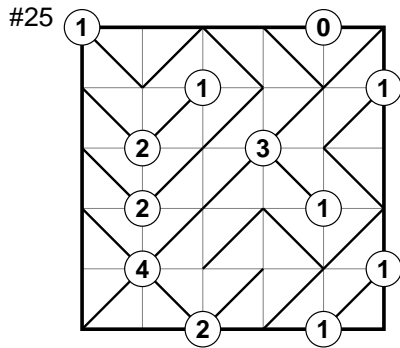


#24



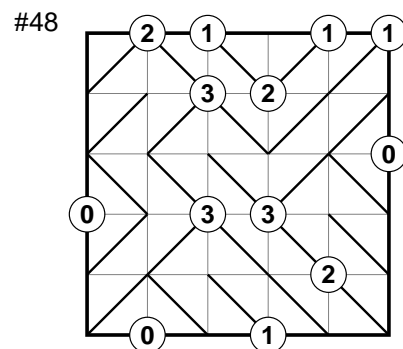
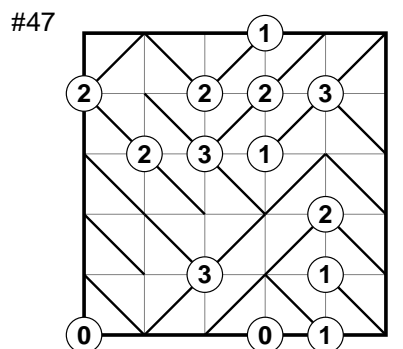
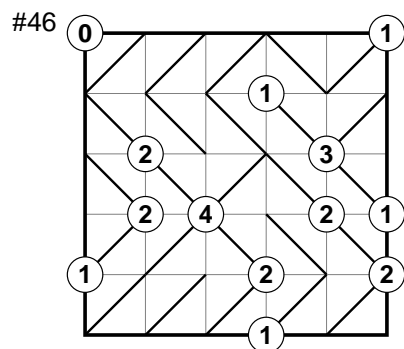
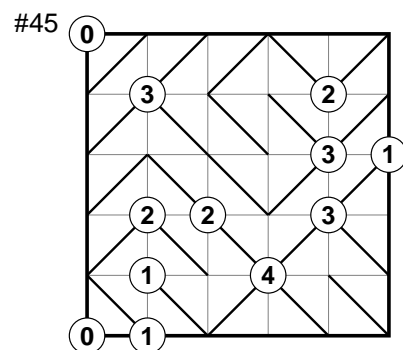
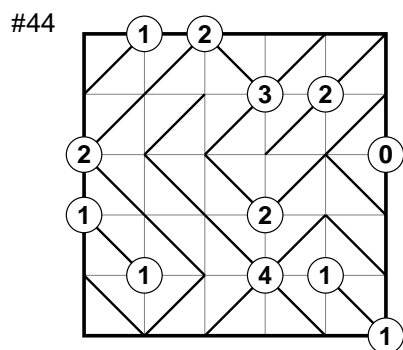
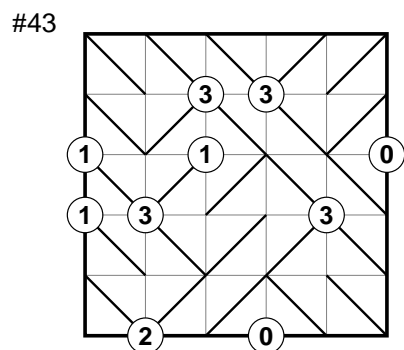
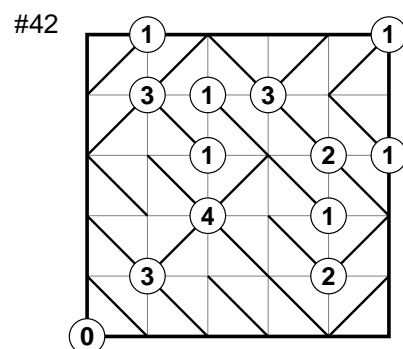
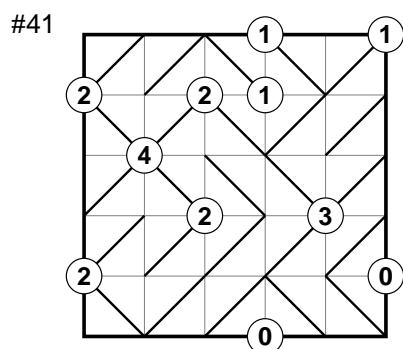
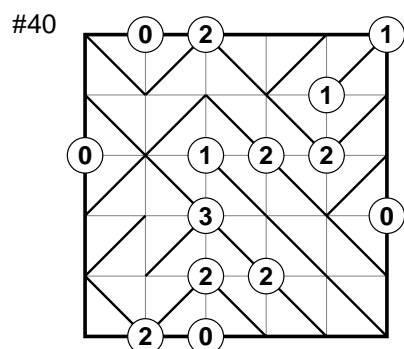
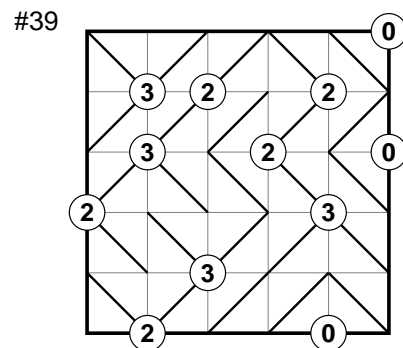
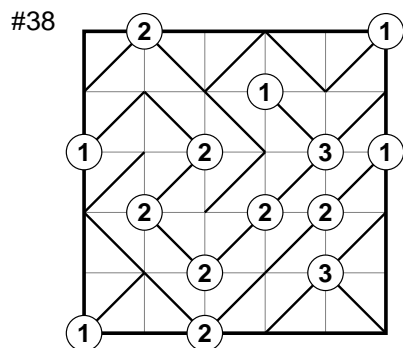
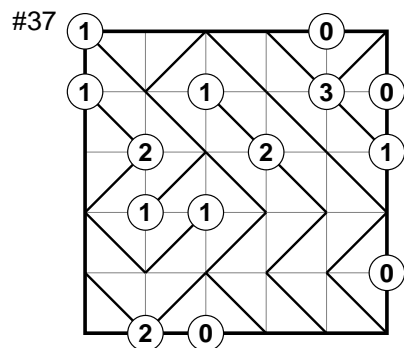
Fill each cell with a diagonal line (/ or \). The numbers at the intersections indicate how many diagonals touch that corner. The diagonal lines must not form a closed loop.

Zigzag Answers



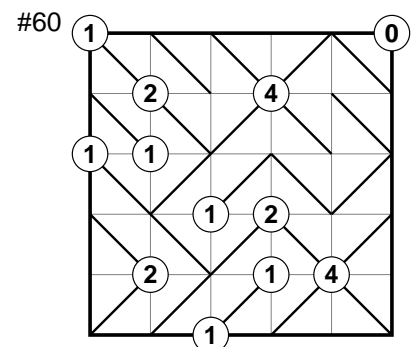
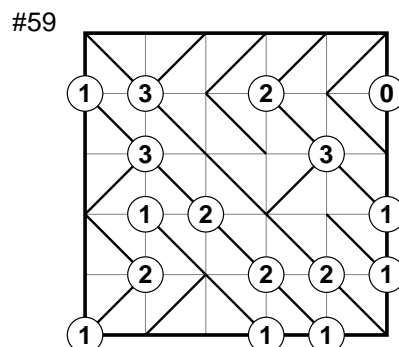
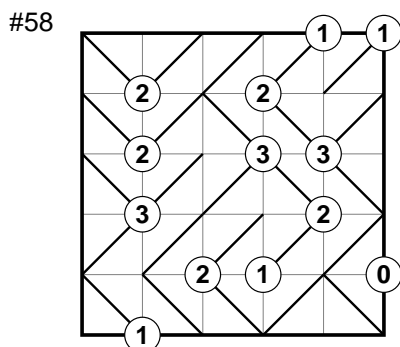
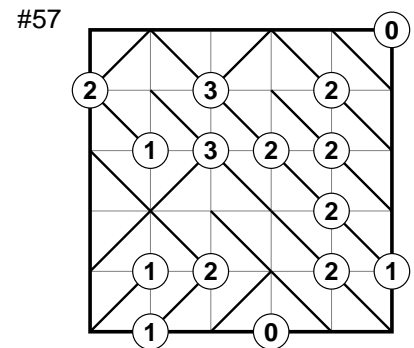
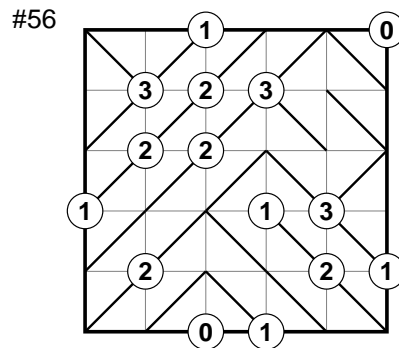
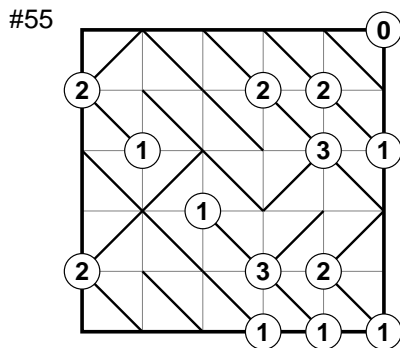
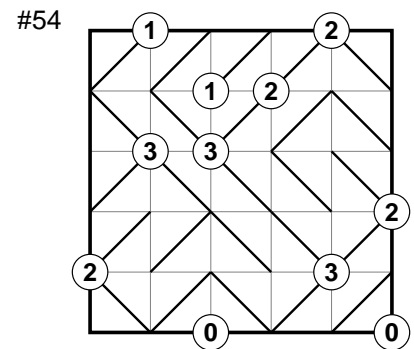
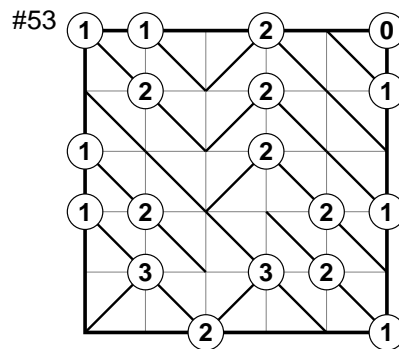
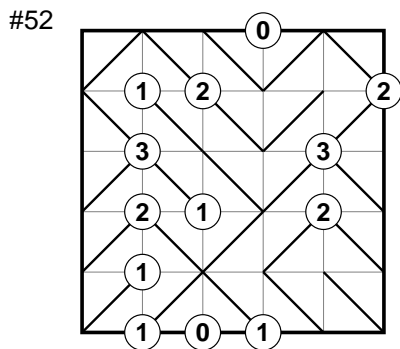
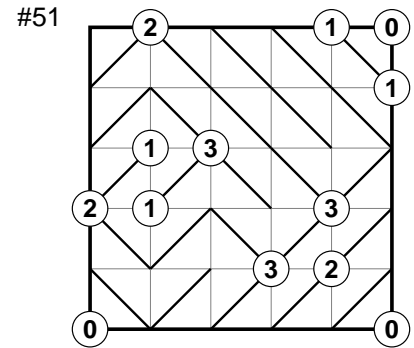
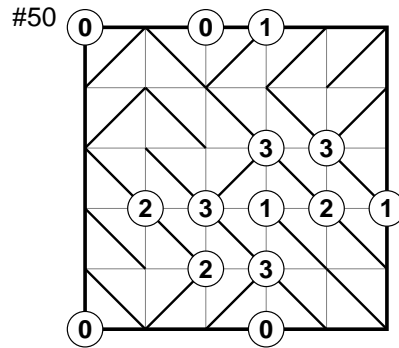
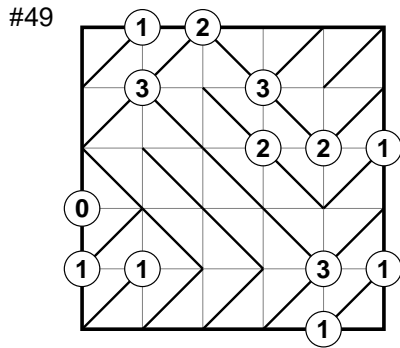
Fill each cell with a diagonal line (/ or \). The numbers at the intersections indicate how many diagonals touch that corner. The diagonal lines must not form a closed loop.

Zigzag Answers



Fill each cell with a diagonal line (/ or \). The numbers at the intersections indicate how many diagonals touch that corner. The diagonal lines must not form a closed loop.

Zigzag Answers



Fill each cell with a diagonal line (/ or \). The numbers at the intersections indicate how many diagonals touch that corner. The diagonal lines must not form a closed loop.